



# Supervision solutions for Rooftop units

Montilla Site  
January 2022

# Index

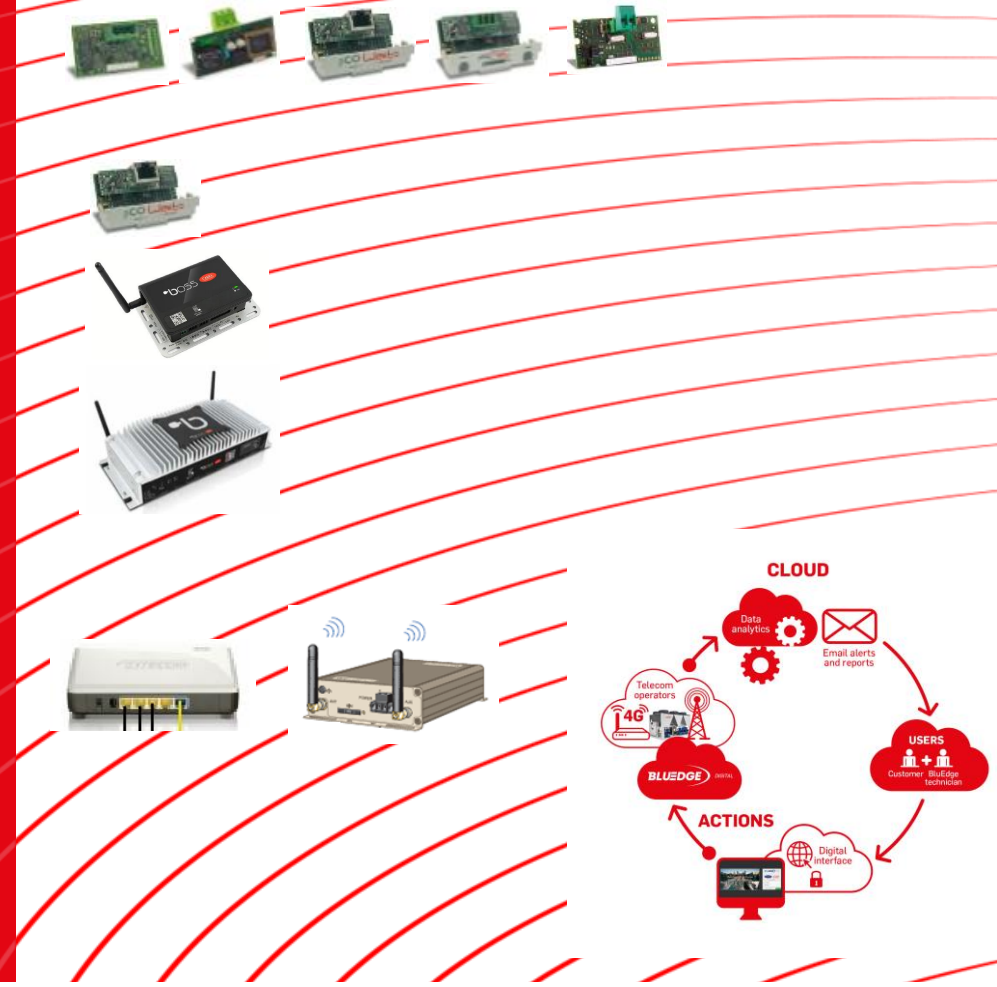
## DIFFERENT MONITORING PROTOCOLS

## DIFFERENT MONITORING SOLUTIONS

- PCOWEB CIAT (1 unit) –HTML page
- BOSS MINI CIAT (until 10 units)
- BOSS CIAT (until 300 units)

## REMOTE CONNECTION TO INSTALLATION

- ROUTER
- BLUEDGE DIGITAL



# DIFFERENT MONITORING PROTOCOLS



RS485



LON



pCOWeb



pCOnet



Konnex



Modbus®

LONWORKS®

HTTP 

SNMP 

XML  BACnet™

 BACnet™



# DIFFERENT MONITORING PROTOCOLS

The electronic control is designed to allow the establishment of a communication with a centralized management system using a BMS card specified for each of the following protocols:

## **MODBUS**

For monitoring network with MODBUS protocol, you must connect each electronic control with RS485 serial card.

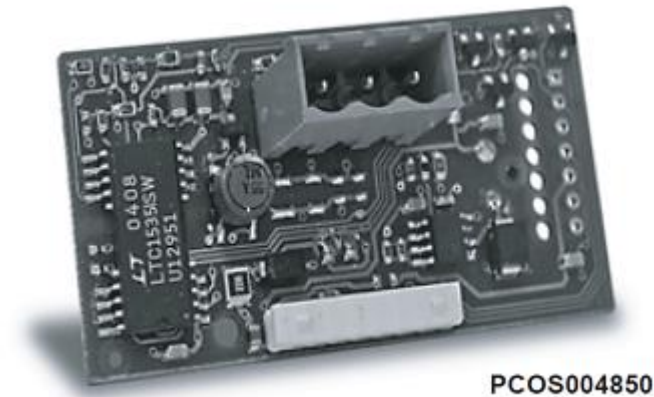
Protocol:

**Modbus®**



Speed: 1200, 2400, 4800, 19200 bps

Address: 1...207



# DIFFERENT MONITORING PROTOCOLS

## LONWORKS

To communicate with a network with the LonWorks protocol, each electronic control requires a serial card FTT-10A 78kbs (TP / FT-10).

The monitoring program is stored in flash memory and can be programmed directly from the LonWorks network using tools such as LonMaker.

Protocol: **LONWORKS**

Speed: 4800 bps

Address: 1



Factory settings → **YES**

Programming tool → **LONset**

# DIFFERENT MONITORING PROTOCOLS

## BACNET

To establish communication with a network with the BACNet™ MSTP protocol is needed a BACnet™ RS485 serial card.

This open standard, developed by ASHRAE, enables air conditioning and heating systems for homes and buildings to be connected for the sole purpose of performing intelligent energy management.

Protocol: CAREL

Speed: 19200 bps

Address: 1



Factory settings of BACNET → **NO**

Programming tool → BACset

# DIFFERENT MONITORING PROTOCOLS

## ETHERNET

To communicate with a network with **TCP/IP**  
**MODBUS, ETHERNET BACNET, TCP/IP, SNMP**  
**V1 V2 V3, FTP y HTTP** protocols, each electronic  
control requires an ethernet card.



Protocol: CAREL

Speed: 19200 bps

Address: 1

Factory settings of HTML → **YES**

Factory settings of BACNET → **NO**  
Programming tool → BACset

# DIFFERENT MONITORING PROTOCOLS

## KONNEX (KNX)

To communicate with a network with the KONNEX protocol (before EIB, European Installation Bus), each electronic card need a KONNEX serial card. This open standard allow the interconnection and integration of home automation devices in both commercial and residential level applications.

Protocol: MODBUS

Speed: 9600 bps

Address: 1



Factory settings → **NO**

Programming tool → **K-set**

# DIFFERENT MONITORING SOLUTIONS

- PCOWEB CIAT (1 unit – HTML page)
- BOSS MINI (10 units)
- BOSS CIAT (300 units)



**PCOWEB CIAT  
(1 UNIT – HTML PAGE)**



# DIFFERENT MONITORING SOLUTIONS

## PCOWEB CIAT (1 unit)

The PCOWEB is a solution developed for monitoring a unit single via the Ethernet network of the installation.

The PCOWEB is always installed on the BMS communication port of the electronic control



The PCOWEB connected to the Ethernet network has the following functions: WEB server (design of HTML pages), data logging, graphics creation, sending e-mail, MODBUS communication protocol over TCP/IP, Ethernet BACnet ISO8802-2 over 8802-3 and BACnet/IP, FTP server (upload y download of files), DHCP (automatic IP address), updating your firmware and update the software installed on the electronic control.

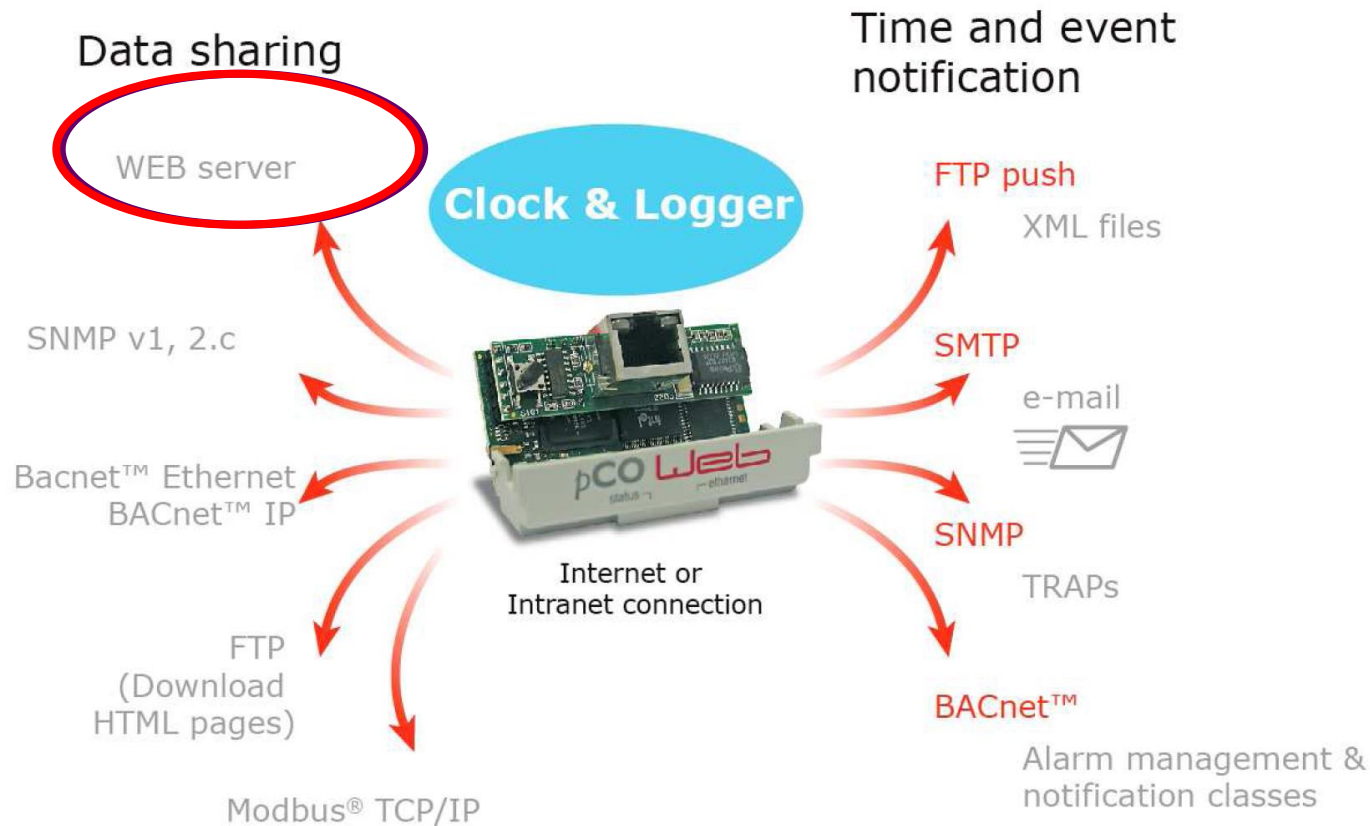
# DIFFERENT MONITORING SOLUTIONS

## PCOWEB CIAT (1 unit)



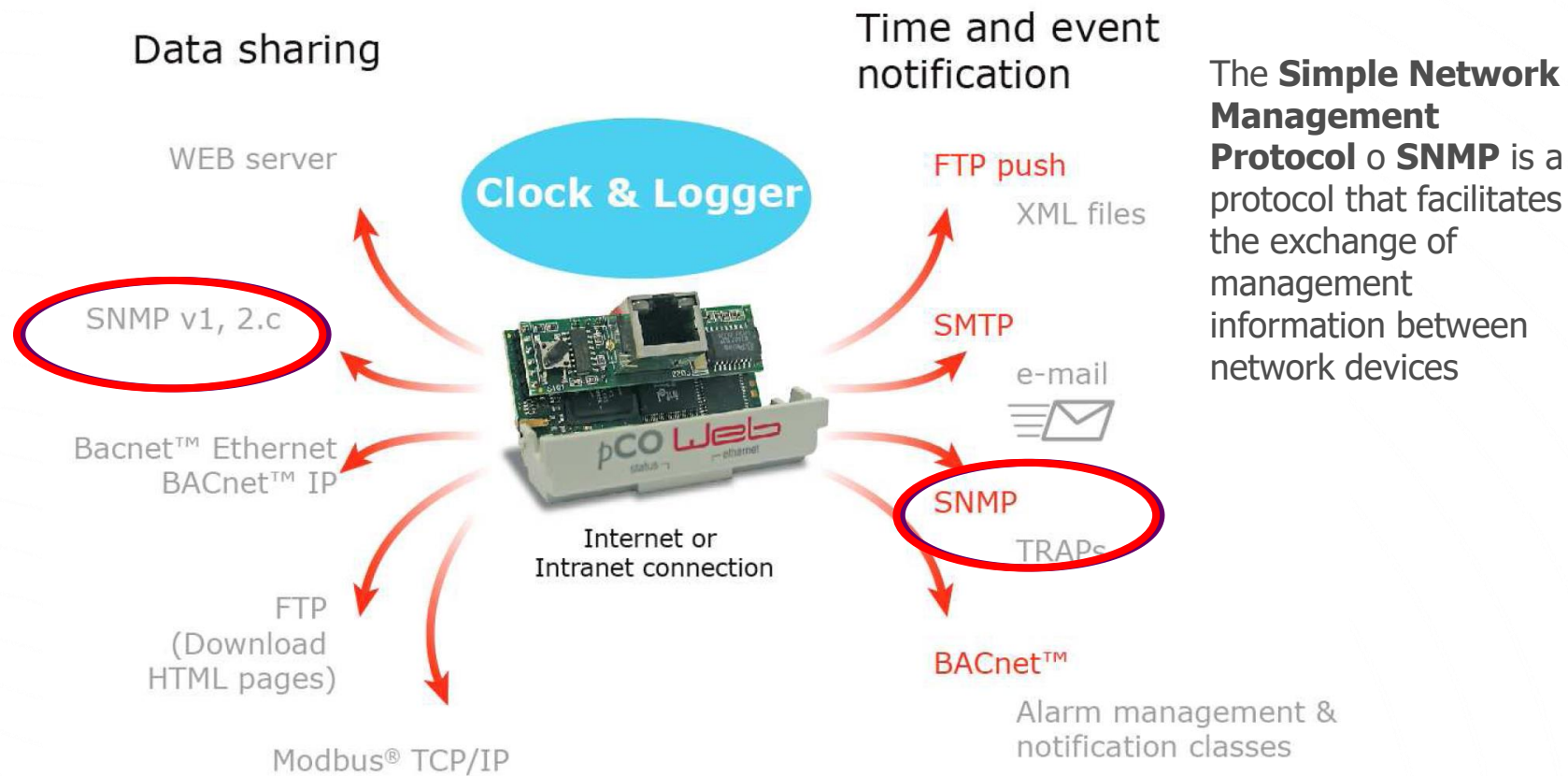
# DIFFERENT MONITORING SOLUTIONS

## pCOWeb – Web Server



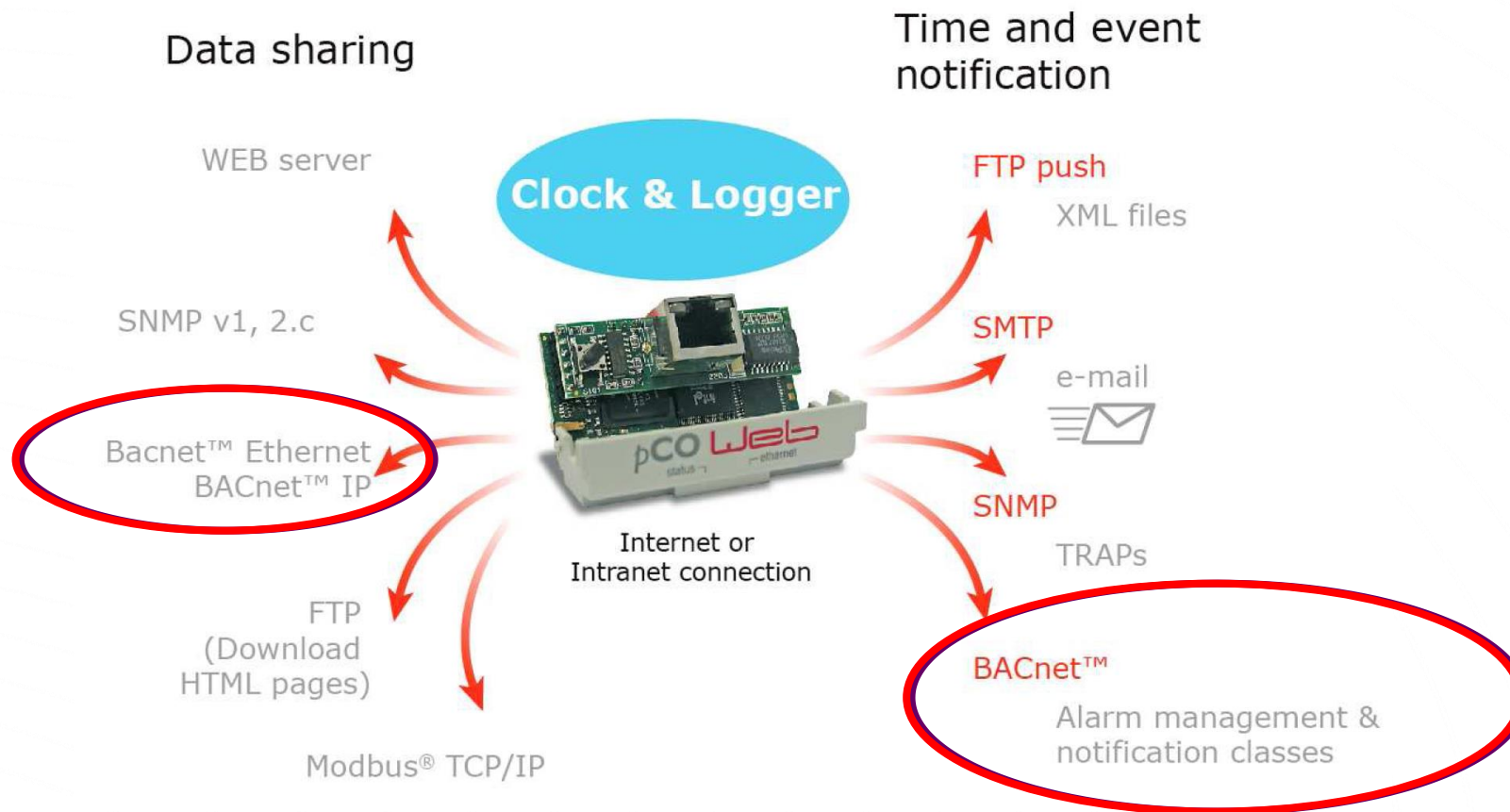
# DIFFERENT MONITORING SOLUTIONS

## pCOWeb – SNMP



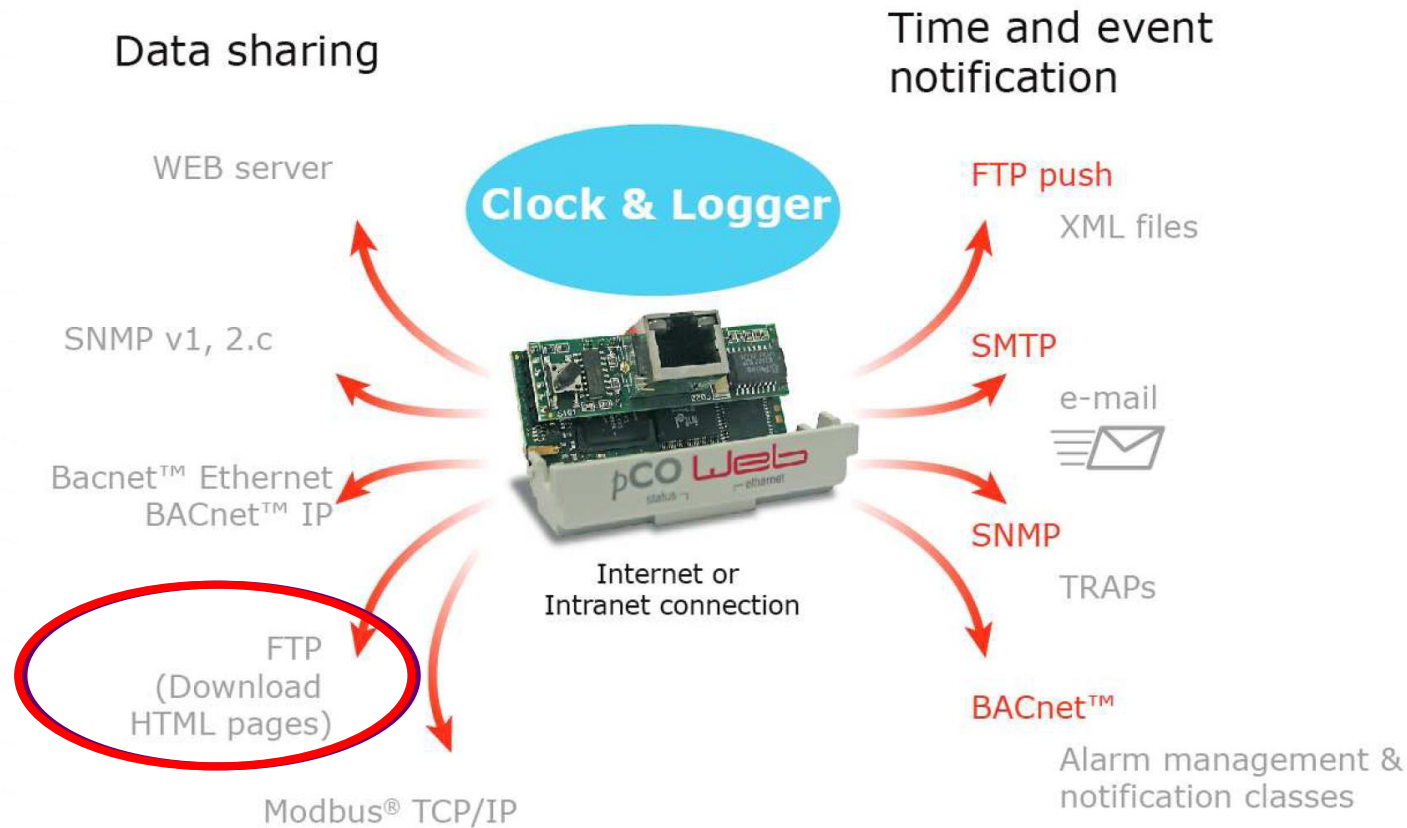
# DIFFERENT MONITORING SOLUTIONS

## pCOWeb – BACNET: IP and Ethernet



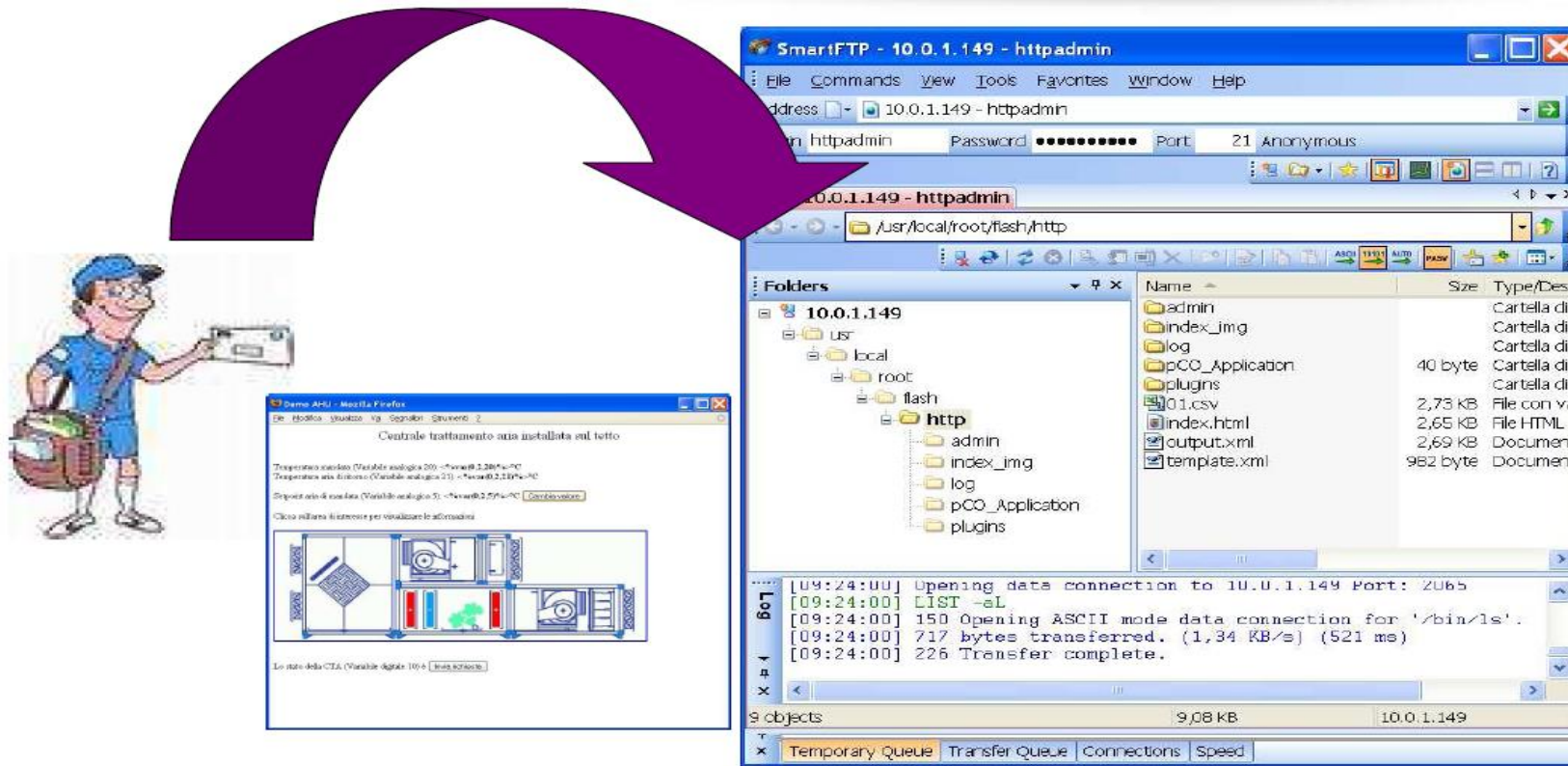
# DIFFERENT MONITORING SOLUTIONS

## pCOWeb – FTP Server



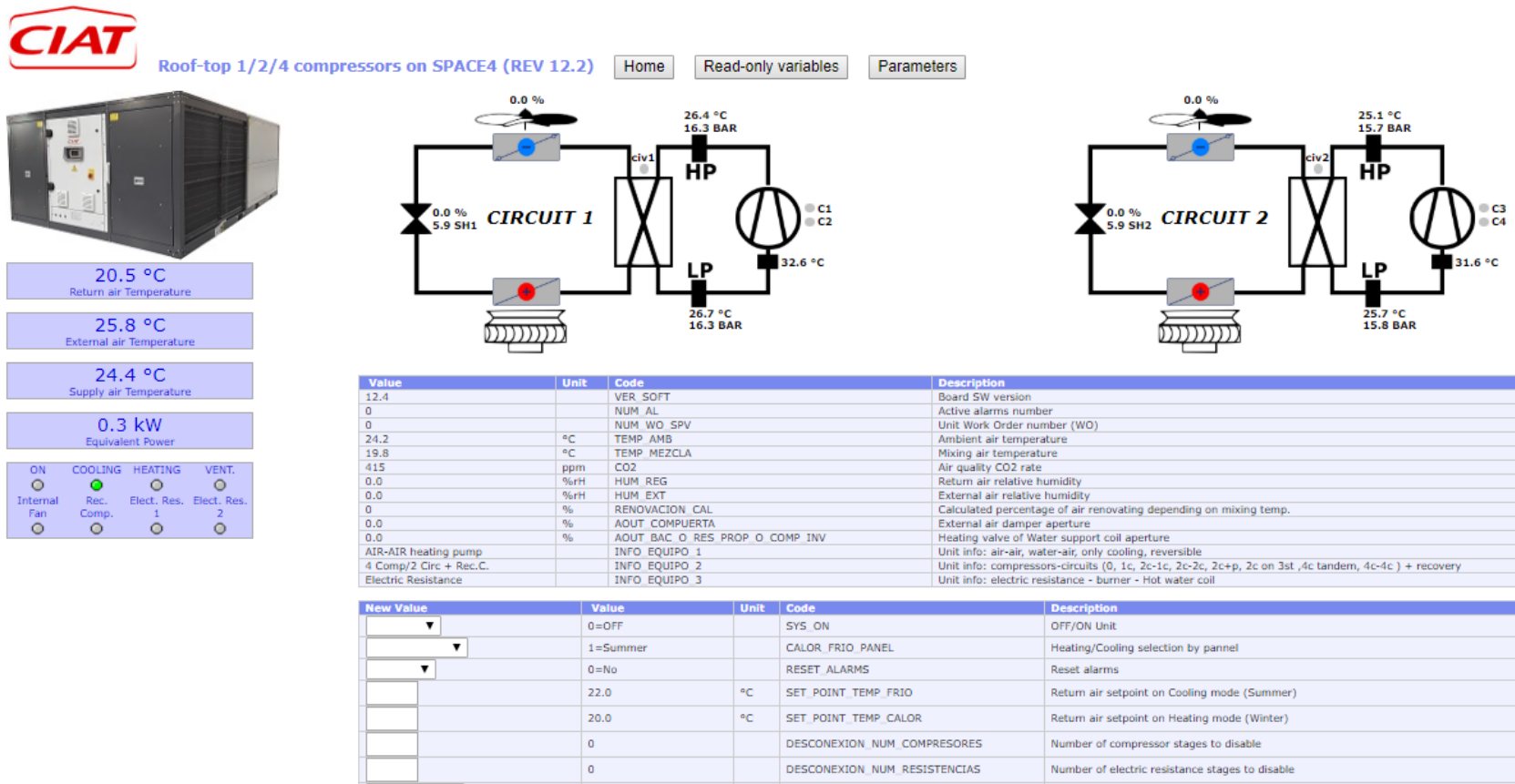
# DIFFERENT MONITORING SOLUTIONS

## pCOWeb – FTP Server



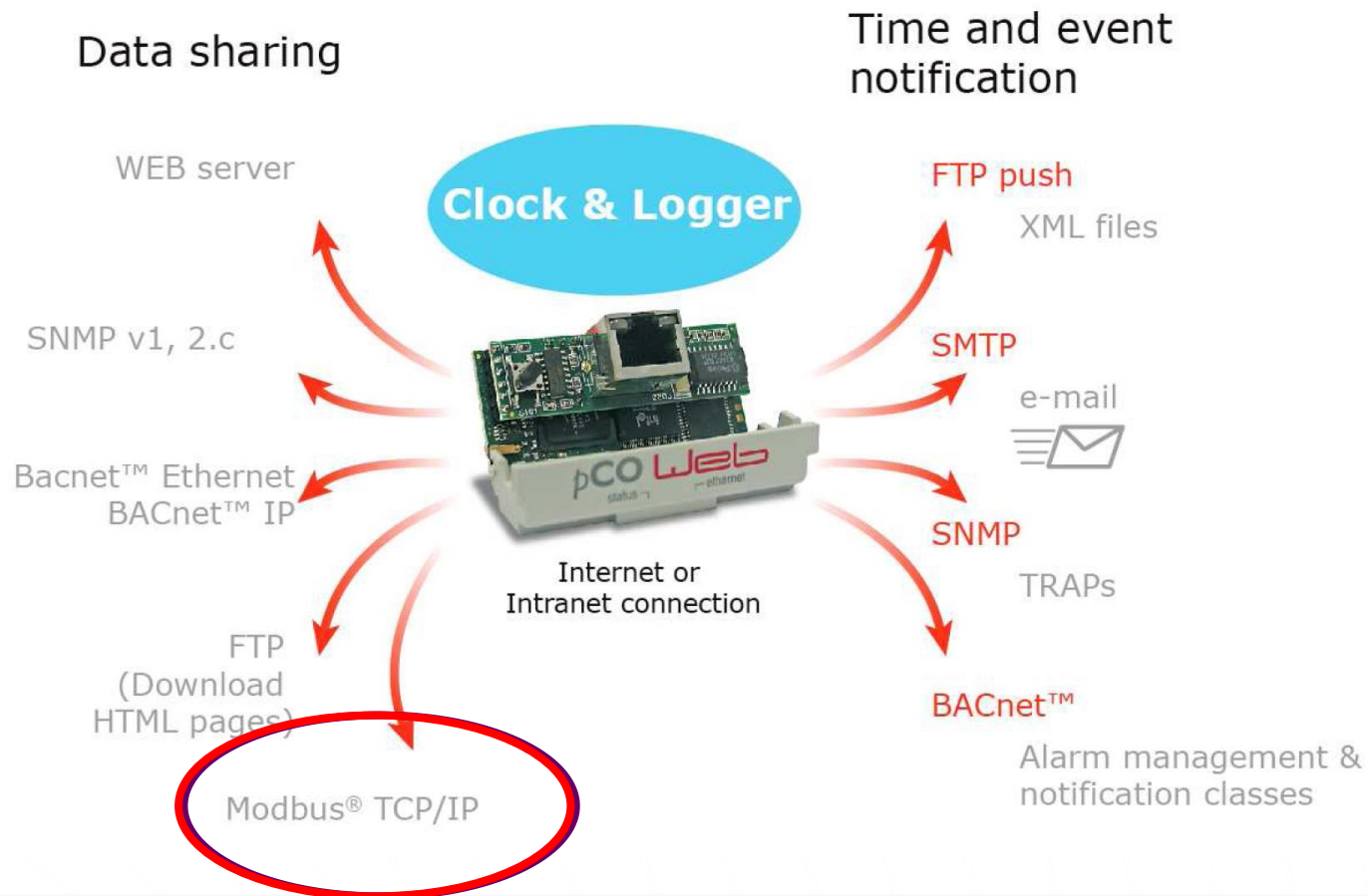
# DIFFERENT MONITORING SOLUTIONS

## pCOWeb – FTP Server (html VECTIC)



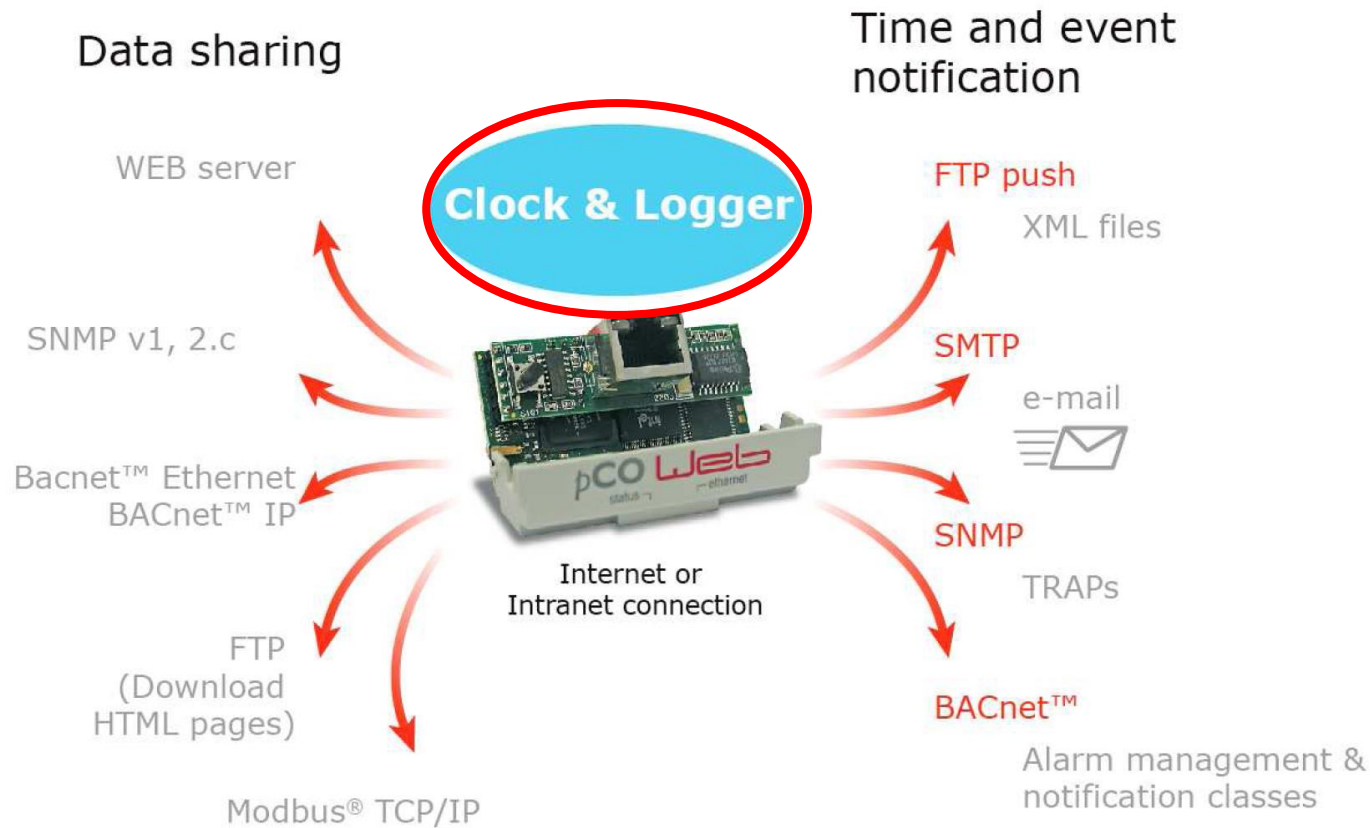
# DIFFERENT MONITORING SOLUTIONS

## pCOWeb – TCP/IP Modbus



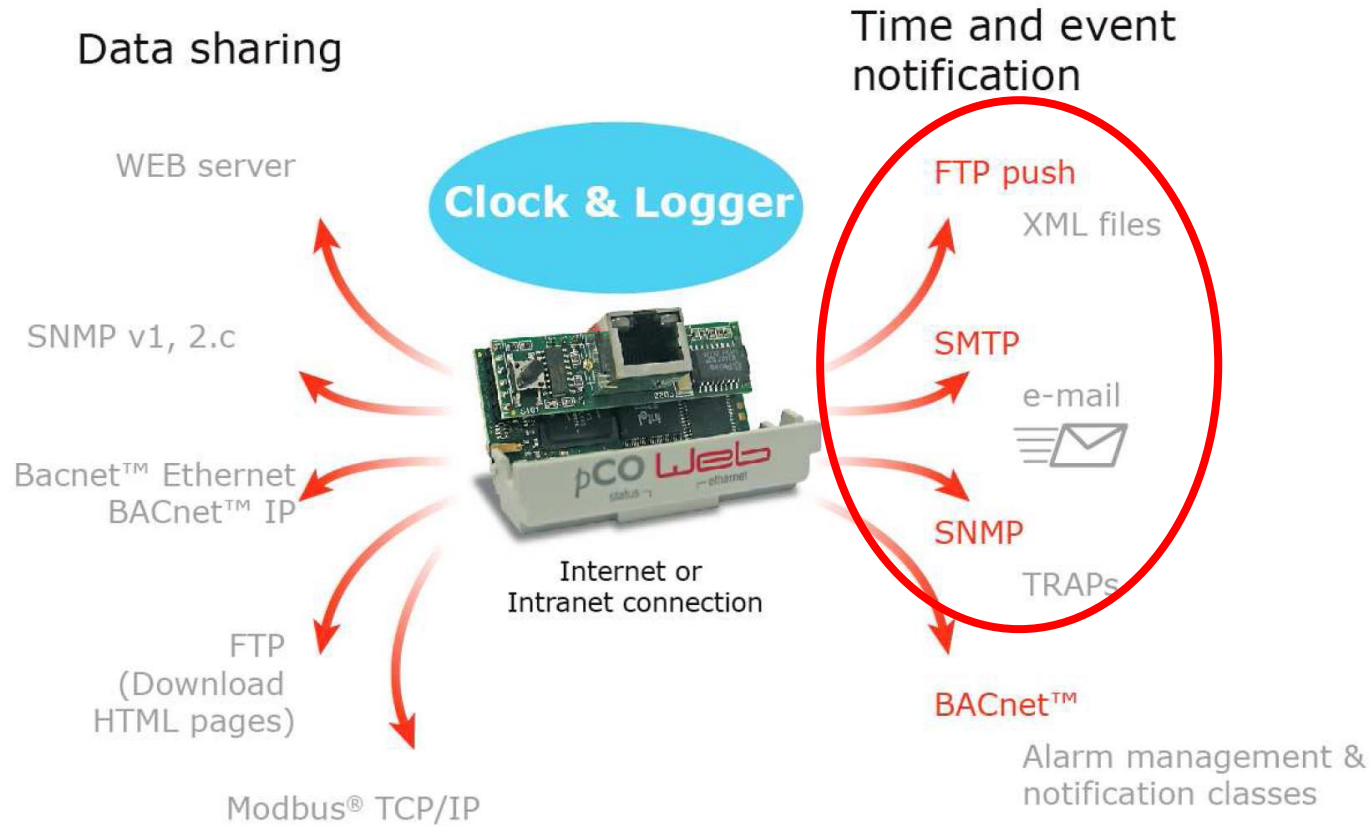
# DIFFERENT MONITORING SOLUTIONS

## pCOWeb – Clock & Logger



# DIFFERENT MONITORING SOLUTIONS

## pCOWeb – Events



# DIFFERENT MONITORING SOLUTIONS

## pCOWeb – Software upgrade from remote

Configuration → Firmware → pCo Application Upgrade

The screenshot displays the pCOWeb web interface. The left sidebar contains a menu with items: Information, Configuration, Clock & Logger, Events, Tests, Customer Site, and Info & Contact. The main content area has tabs for General, Network, pCO Com, SNMP, BACnet, Plugins, Users, and Firmware. The Firmware tab is active, showing a warning: "!!BE CAREFUL!! Any power supply interruption during upgrade may corrupt pCOWeb or pCO; in this case, the devices must be sent back to Carel for reprogramming. Before upgrade, pCOWeb will shut down all services in order to free memory." Below this, the "pCOWeb Firmware Upgrade" section lists two files to be uploaded: flash\_apps\_Axxx.bin and flash\_sys\_Byyy.bin. The "pCO Application Upgrade" section is circled in red and lists two steps: 1. pCO with BIOS >= 4.10 (4.20 recommended) to automatically switch to pCOLoad mode; 2. zip file containing the new application. It also includes a password field and a zip file upload button.

**Information**

**Configuration**

**Clock & Logger**

**Events**

**Tests**

**Customer Site**

**Info & Contact**

Reboot

System is using:  
User parameters

Firmware Release:  
A1.5.0 - B1.2.4

Mac Address:  
00:0a:5c:10:74:86

pCOWeb's date:  
2015-02-08 10:48

W3C HTML 4.01

**General** **Network** **pCO Com** **SNMP** **BACnet** **Plugins** **Users** **Firmware**

**!!BE CAREFUL!!**  
Any power supply interruption during upgrade may corrupt pCOWeb or pCO;  
in this case, the devices must be sent back to Carel for reprogramming.  
Before upgrade, pCOWeb will shut down all services in order to free memory.

**pCOWeb Firmware Upgrade**

To fully upgrade pCOWeb firmware you need two files:

1. flash\_apps\_Axxx.bin to upgrade applications;
2. flash\_sys\_Byyy.bin to upgrade the base operating system.

pCOWeb firmware file  Examiner...

Upload

**pCO Application Upgrade**

To upgrade pCO application you need:

1. pCO with BIOS >= 4.10 (4.20 recommended) to automatically switch to pCOLoad mode;
2. zip file containing the new application.

Refer to pCOWeb User Manual for more information.

Password (if pCO is protected)

pCO application zip file  Examiner...

Upload

# DIFFERENT MONITORING SOLUTIONS

## PCOWEB CIAT (1 unit)

EXAMPLE OF REMOTE ACCESS TO PCOWEB

<http://10.122.19.237/>



### UTILITIES - UTILIDADES

- Go to Administrator Area - Ir al Area de Administrador
- Go to UNIT with CIATRTC CONTROL (ENGLISH)
- Ir a UNIDAD con CONTROL CIATRTC (ESPAÑOL)

### Information

Main IP Address: 172.26.0.177  
Mac Address: 00:0a:5c:10:74:86  
Firmware Release: A1.5.0 - B1.2.4

**BOSS MINI CIAT  
(10 UNITS)**



# DIFFERENT MONITORING SOLUTIONS

## BOSS MINI CIAT (until 10 units)

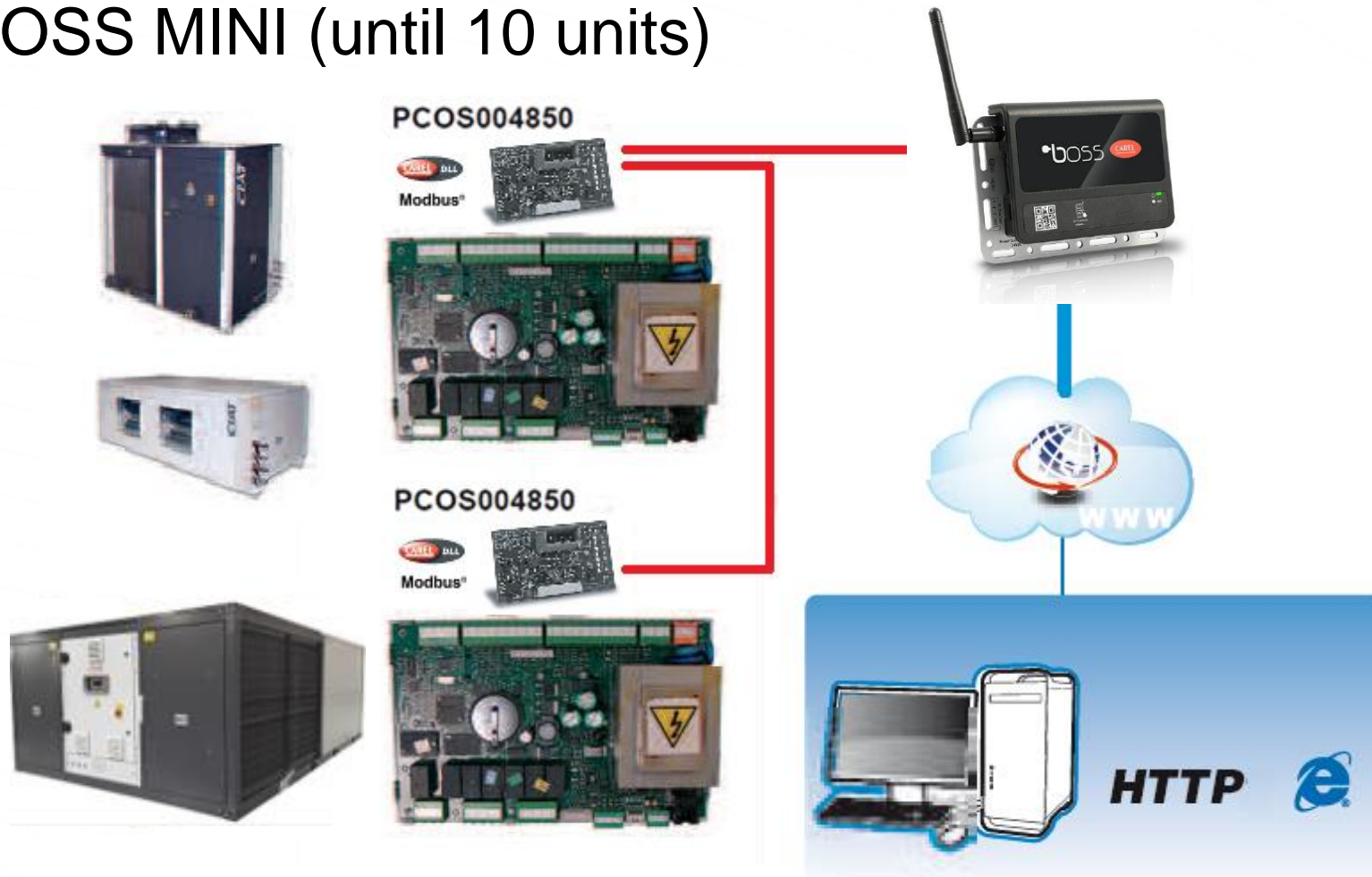
The local supervisor for small and medium with built-in Wi-Fi, accessible from all mobile devices.

- ◆ Completely browsable from mobile devices, from commissioning to daily access for system maintenance;
- ◆ Built-in Wi-Fi to create a network and allow the supervisor to be accessed from the user's devices without requiring other network infrastructure.
- ◆ Boss introduces the Bacnet protocol (MS/TP and TCP/IP) together with the Modbus protocols (MS/TP and TCP/IP)
- ◆ BMS integration with IP Slave mode (sharing the values of interest for overall building management)



# DIFFERENT MONITORING SOLUTIONS

## BOSS MINI (until 10 units)



# DIFFERENT MONITORING SOLUTIONS

## boss-mini - the solution

The new compact dimension of boss

All the advanced features of the high-end boss solution available now for medium size plants



mini  
boss

### Plant control on your mobile

- integrated wifi hotspot
- fully mobile compatible from first boot to ordinary maintenance

# DIFFERENT MONITORING SOLUTIONS

## boss-mini – the product

### HW FEATURES:

- 24Vdc power supply
- 2 RS485 ports
- 2 Ethernet ports (2 different IP)
- 3 digital output (+24Vdc command)
- 1 USB port
- 1 SD slot
- 1 "recovery mode" button
- 2 system led (on/off – alarm)
- 1 micro HDMI output
- 1 wifi hotspot

10 devices with 50 variables  
logged for each device (500  
variables)



User interaction	
RemotePRO	x
Local network	x
WIFI hotspot	x
Embedded HDMI	x
Devices / Variables logged	50/500

# DIFFERENT MONITORING SOLUTIONS

## USB port:

- it's for connecting USB pendrive, mouse, touch monitor, keyboard, printer, UMTS modem.

## SD memory card:

- it's for saving back-up (manual and automatic ones), report and other files allowed by the export functions of boss-mini;

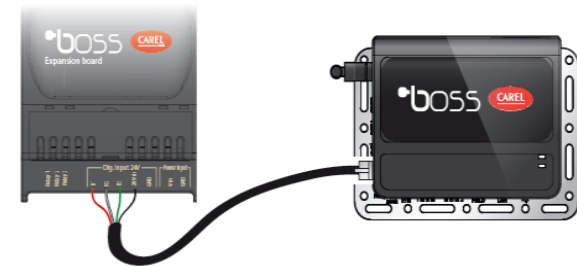
## RS485 ports:

- 1 opto-isolated RS485 (for devices in the system)
- 1 not opto-isolated RS485 (for devices in the panel or close to boss-mini)
- not possible to add more using external USB-RS485 converter



## External relay module:

External relay module directed supplied by boss-mini



## Power supply:

Power supply DIN and plug models:



# DIFFERENT MONITORING SOLUTIONS

## boss-mini – the evolution

Top class connectivity

- WIFI for local user access Integrated wifi hotspot for direct access without any extra infrastructure
- Mobile/smarthphone compatibility Completely browsable from mobile devices, from commissioning to daily access
- Enhanced channel for remote support Fully and secure supervisor control from remote (also OS level) trough a simple browser



# DIFFERENT MONITORING SOLUTIONS

---

## BOSS mini CIAT (until 10 units)

- With new Bacnet master protocol (IP and MS/TP) , and Modbus master (TCP/IP and RTU) customers can integrate also third party HVAC devices and enlarge the proposal of CAREL
- Carel master, Modbus master (RTU and TCP/IP) are always activated on boss
- With new BACnet slave (IP) , and Modbus slave (TCP/IP and RTU) protocols, boss can be integrated also in third party BMS HVAC system, for sharing some data of the boss to other systems
- Modbus slave (RTU and TCP/IP), BACnet master (MS/TP and IP) and BACNet slave, are not activated as default, they have to been enabled as extra features (plug-in)

# DIFFERENT MONITORING SOLUTIONS

---

## BOSS mini CIAT (until 10 units)

- 24 HOURS A DAY – 7 DAYS A WEEK
- 14 DIFFERENT LANGUAGES  
English, Italian, French, German, Spanish, Portuguese, Czech, Greek, Russian, Chinese, Turkish, Swedish, Polish and Magyar. Template for each unit, only in Spanish, French and English (possibility of including more languages)
- 4 USER ACCESS LEVELS

# DIFFERENT MONITORING SOLUTIONS

---

## BOSS mini CIAT (until 10 units)

- FACTORY PRECONFIGURATION AND CUSTOMIZATION
  - ACCORDING TO CUSTOMER SPECIFICATIONS AND NEEDS
  - BASIC CUSTOMIZATION:
    - ▶ LANGUAGE CONFIGURATION: ENGLISH + USER LANGUAGE
    - ▶ SITE DRAWING WITH DIRECT ACCESS TO EACH UNIT
    - ▶ ACTIVITY TIME PROGRAMMING EXAMPLE
    - ▶ CONTROL TEMPLATES IN ENGLISH, FRENCH OR SPANISH

# DIFFERENT MONITORING SOLUTIONS

## BOSS mini CIAT (until 10 units)

- MAIN OPTIONS

- **ENERGY PACK PLUG-IN** → SOFTWARE EXPANSION THAT ALLOWS A COMPLETE ENERGY CONSUMPTION MANAGEMENT

- **LOGICAL VARIABLES PACK PLUG-IN** → SOFTWARE EXPANSION THAT ALLOWS A COMPLETE LOGICAL VARIABLES CONFIGURATION

- **APP "TELEGRAM"** → TO SEND MESSAGE IN CASE OF ALARM

- **ENERGY METER** → FACTORY MOUNTED IN ELECTRICAL PANEL



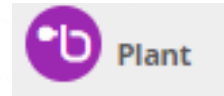
Telegram



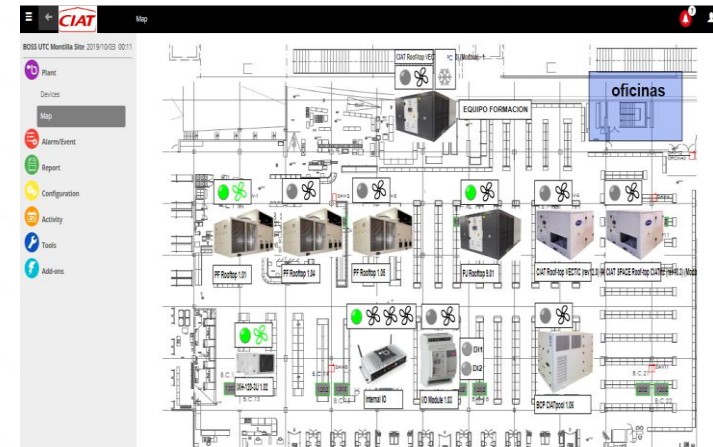
# DIFFERENT MONITORING SOLUTIONS

## BOSS mini CIAT (until 10 units)

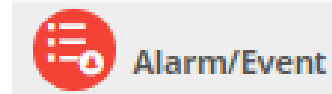
### ◆ UNIT MANAGEMENT



- All the information is available using some summary pages
- Site overview thanks to the customized drawings, including the units



### ◆ ALARM MANAGEMENT



- All the detected alarms are notified to the maintenance manager (telegram, e-mail, relay, ...)
- Automatic updates of operating parameters can be configured in response to alarms

A screenshot of the 'Alarms list' section in the CIAT monitoring software. It shows a table with columns for Priority, Date Time, and Description. There are six rows of data, all showing a priority of 1 (indicated by a red square) and a status of 'OFFLINE' (indicated by blue text). The dates and times are from 2019/09/27 and 2019/10/02. Above the table, there are links for 'Active alarms' and 'Reset alarms'.

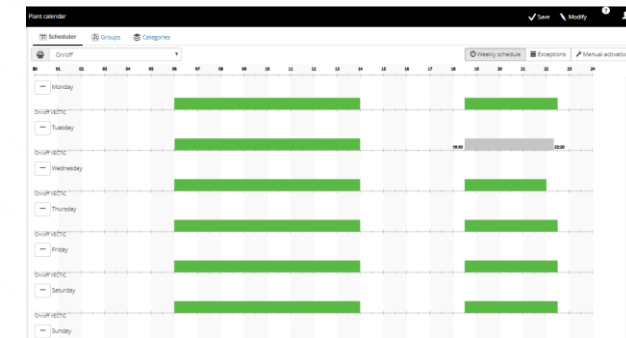
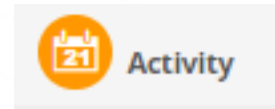
Priority	Date Time	Description
1	2019/10/02 17:33:08	OFFLINE
1	2019/09/27 11:40:10	OFFLINE
1	2019/09/27 11:40:10	OFFLINE
1	2019/09/27 11:39:40	OFFLINE
1	2019/09/27 11:39:40	OFFLINE
1	2019/09/27 11:39:40	OFFLINE

# DIFFERENT MONITORING SOLUTIONS

## BOSS mini CIAT (until 10 units)

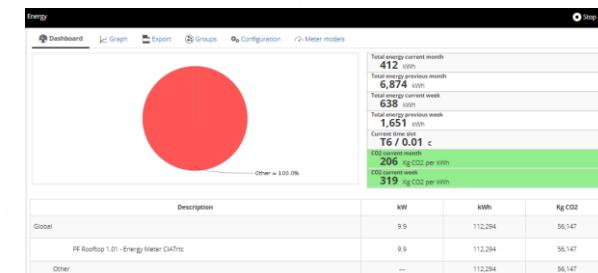
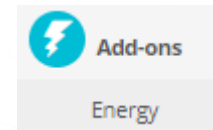
### ◆ PLANNER SCHEDULER

- Some actions or events can be programming according to the date, time, working mode, alarm, ....



### ◆ ENERGY MANAGEMENT (plug-in)

- Realtime data acquisition
- Statistical and economic analysis are presented on graphs or reports and the user can check the consumption trend over time



# DIFFERENT MONITORING SOLUTIONS

# BOSS mini CIAT (until 10 units)

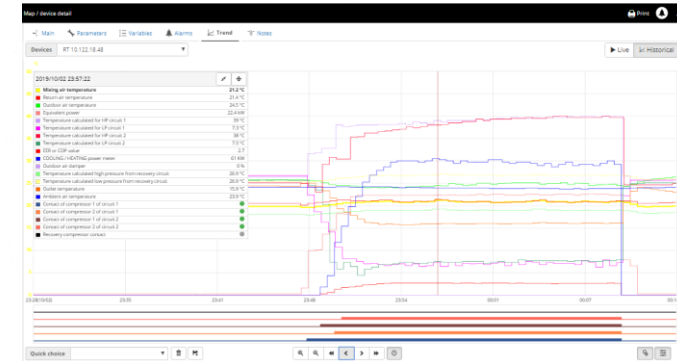
## ◆ REMOTE CONTROL

- A physical IP address allows to establish the connection via Internet
- Web interface is the same as local interface



## ◆ REPORT AND GRAPHS

- Represent the values and trends of all logged variables in the system
- Data are easily accessible to each user for analysis



# DIFFERENT MONITORING SOLUTIONS

BOSS mini CIAT (until 10 units)

**Local**



+



**LAN**



+



**Wifi**



+



# DIFFERENT MONITORING SOLUTIONS

## boss – the family

Continuity of user experience with  
BOSS: one range for all formats

- Scalable supervisory range in terms of features and price to fit all the scenarios
- Dedicated boss mini HW models for different user interaction needs
- Same user interface and same functionalities for all your sites



## boss-mini VS boss

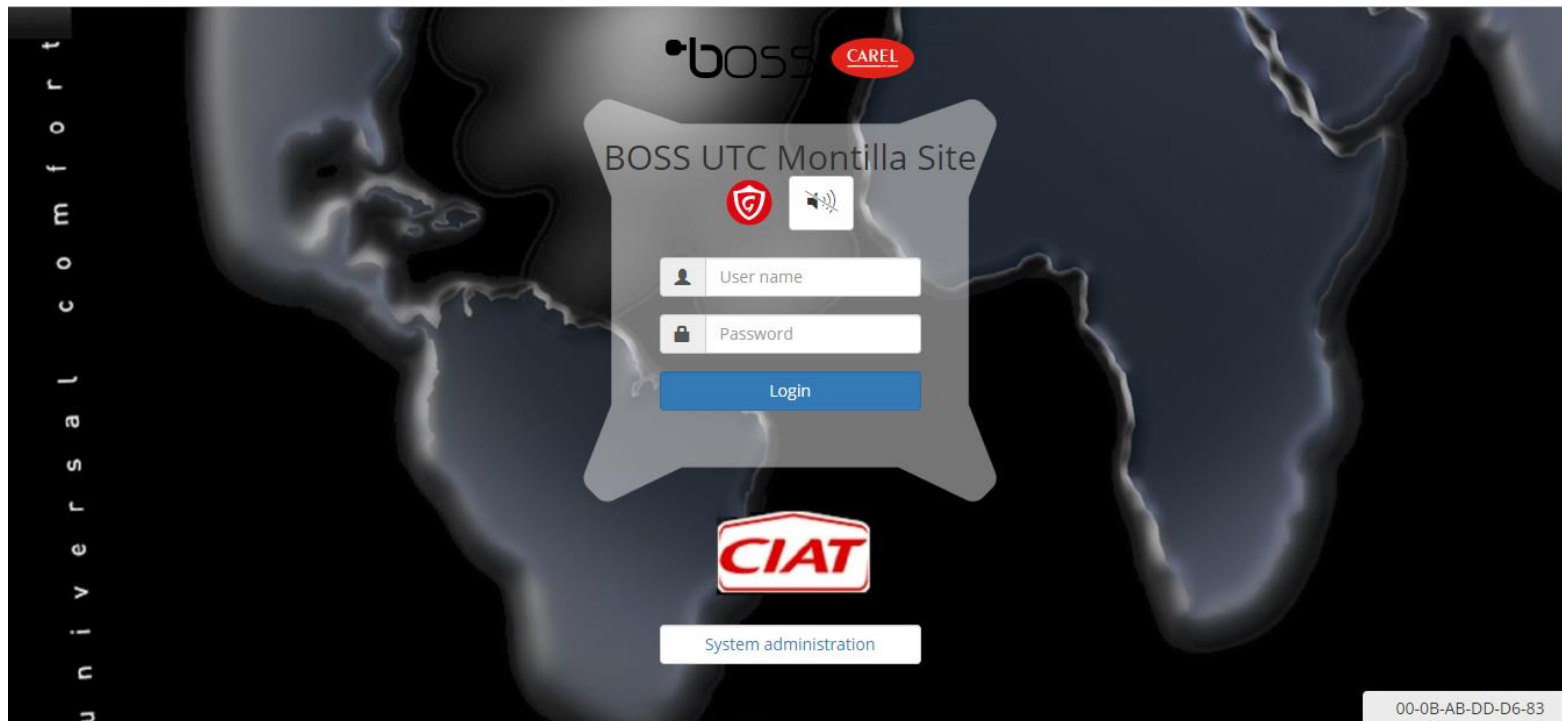
Function	boss-mini	boss
Maximum number of devices connected	50	300
Maximum number of logged variables	500	3500
Minimum variable sampling time	30 sec	5 sec
Maximum number of plug-ins that can be activated	3	20
Maximum number of reports that can be recorded in the internal memory	60	200

# DIFFERENT MONITORING SOLUTIONS

## BOSS MINI CIAT (until 10 units)

EXAMPLE OF REMOTE ACCESS TO

<https://10.122.18.29/boss/>



**BOSS CIAT  
(300 UNITS)**



# DIFFERENT MONITORING SOLUTIONS

## BOSS CIAT (until 300 units)

The local supervisor for medium and large with built-in Wi-Fi, accessible from all mobile devices.

- ◆ Completely browsable from mobile devices, from commissioning to daily access for system maintenance;
- ◆ Built-in Wi-Fi to create a network and allow the supervisor to be accessed from the user's devices without requiring other network infrastructure.
- ◆ Boss introduces the Bacnet protocol (MS/TP and TCP/IP) together with the Modbus protocols (MS/TP and TCP/IP)
- ◆ BMS integration with IP Slave mode (sharing the values of interest for overall building management)



# DIFFERENT MONITORING SOLUTIONS

## BOSS CIAT (until 300 units)



# DIFFERENT MONITORING SOLUTIONS

## BOSS CIAT (until 300 units)



### Plant control on your mobile

- integrated wifi hotspot
- fully mobile compatible from first boot to ordinary maintenance

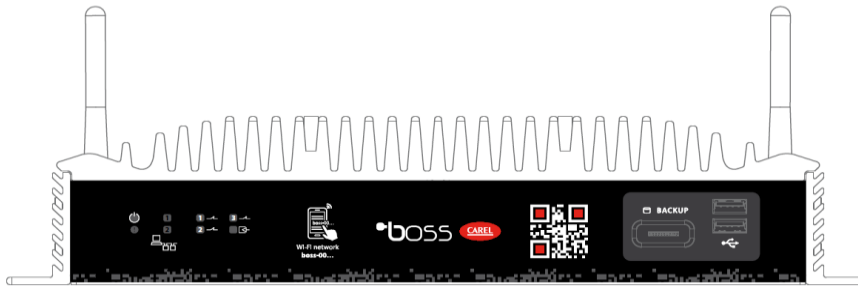
### Tough for all environment

- rugged HW fanless mounted in a strong case
- secure SW in compliance with advanced standards (https, embedded os, backup on sd card)

# DIFFERENT MONITORING SOLUTIONS

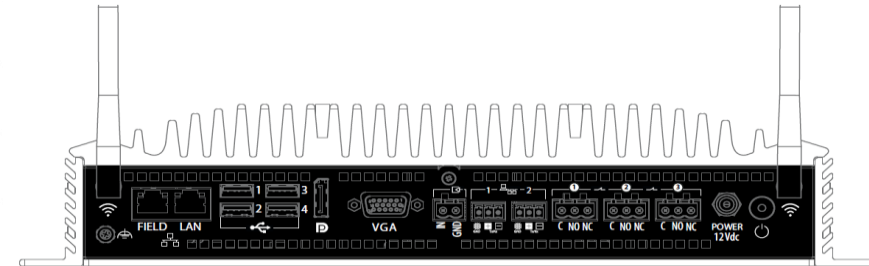
## BOSS CIAT (until 300 units)

Front:



8 status led, uSD slot,  
2 USB ports

Rear:



2 Wi-Fi antennas, 2 Ethernet ports,  
4 USB ports, display and VGA ports,  
1 dig. Input, 2 RS485 port, 3 relays,  
power connector/button

# DIFFERENT MONITORING SOLUTIONS

## BOSS CIAT (until 300 units)

- With new Bacnet master protocol (IP and MS/TP) , and Modbus master (TCP/IP and RTU) customers can integrate also third-party HVAC devices and enlarge the proposal of CAREL
- Carel master, Modbus master (RTU and TCP/IP) are always activated on boss
- With new BACnet slave (IP) , and Modbus slave (TCP/IP and RTU) protocols, boss can be integrated also in third party BMS HVAC system, for sharing some data of the boss to other systems
- Modbus slave (RTU and TCP/IP), BACnet master (MS/TP and IP) and BACNet slave, are not activated as default, they have to been enabled as extra features (plug-in)

# DIFFERENT MONITORING SOLUTIONS

---

## BOSS CIAT (until 300 units)

- 24 HOURS A DAY – 7 DAYS A WEEK
- 14 DIFFERENT LANGUAGES  
English, Italian, French, German, Spanish, Portuguese, Czech, Greek, Russian, Chinese, Turkish, Swedish, Polish and Magyar. Template for each unit, only in Spanish, French and English (possibility of including more languages)
- 4 USER ACCESS LEVELS

# DIFFERENT MONITORING SOLUTIONS

---

## BOSS CIAT (until 300 units)

- FACTORY PRECONFIGURATION AND CUSTOMIZATION
  - ACCORDING TO CUSTOMER SPECIFICATIONS AND NEEDS
  - BASIC CUSTOMIZATION:
    - ▶ LANGUAGE CONFIGURATION: ENGLISH + USER LANGUAGE
    - ▶ SITE DRAWING WITH DIRECT ACCESS TO EACH UNIT
    - ▶ ACTIVITY TIME PROGRAMMING EXAMPLE
    - ▶ CONTROL TEMPLATES IN ENGLISH, FRENCH OR SPANISH

# DIFFERENT MONITORING SOLUTIONS

## BOSS CIAT (until 300 units)

- MAIN OPTIONS

- **ENERGY PACK PLUG-IN** → SOFTWARE EXPANSION THAT ALLOWS A COMPLETE ENERGY CONSUMPTION MANAGEMENT
- **LOGICAL VARIABLES PACK PLUG-IN** → SOFTWARE EXPANSION THAT ALLOWS A COMPLETE LOGICAL VARIABLES CONFIGURATION
- **APP "TELEGRAM"** → TO SEND MESSAGE IN CASE OF ALARM
- **ENERGY METER** → FACTORY MOUNTED IN ELECTRICAL PANEL



Telegram

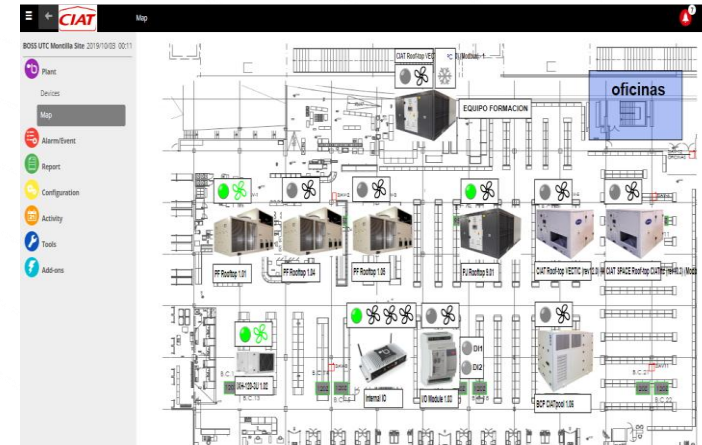
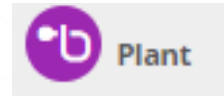


# DIFFERENT MONITORING SOLUTIONS

## BOSS CIAT (until 300 units)

### ◆ UNIT MANAGEMENT

- All the information is available using some summary pages
- Site overview thanks to the customized drawings, including the units



### ◆ ALARM MANAGEMENT

- All the detected alarms are notified to the maintenance manager (telegram, e-mail, relay, ...)
- Automatic updates of operating parameters can be configured in response to alarms



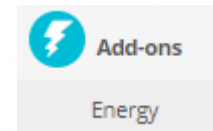
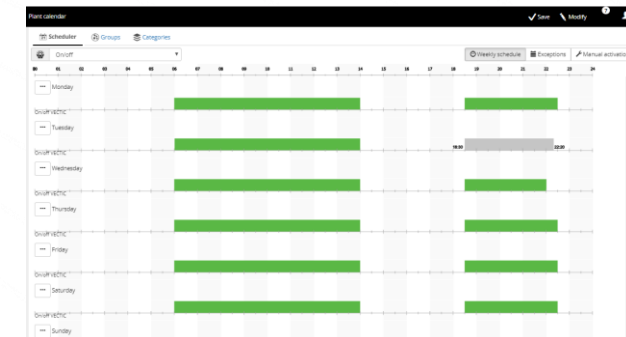
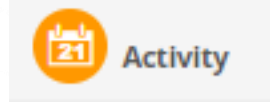
Alarms list		
<a href="#">Active alarms</a> <a href="#">Reset alarms</a>		
Priority	Date Time	Description
■	2019/10/02 17:33:08	OFFLINE
■	2019/09/27 11:40:10	OFFLINE
■	2019/09/27 11:40:10	OFFLINE
■	2019/09/27 11:39:40	OFFLINE
■	2019/09/27 11:39:40	OFFLINE
■	2019/09/27 11:39:40	OFFLINE
■	2019/09/27 11:39:40	OFFLINE

# DIFFERENT MONITORING SOLUTIONS

## BOSS CIAT (until 300 units)

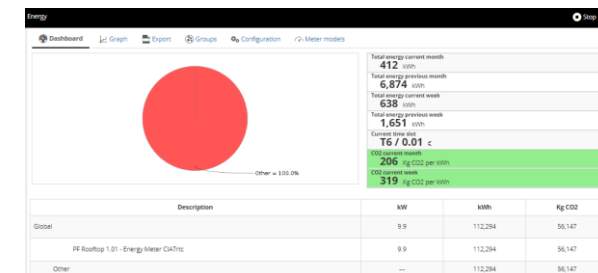
### ◆ PLANNER SCHEDULER

- Some actions or events can be programming according to the date, time, working mode, alarm, ....



### ◆ ENERGY MANAGEMENT (plug-in)

- Realtime data acquisition
- Statistical and economic analysis are presented on graphs or reports and the user can check the consumption trend over time



# DIFFERENT MONITORING SOLUTIONS

# BOSS CIAT (until 300 units)

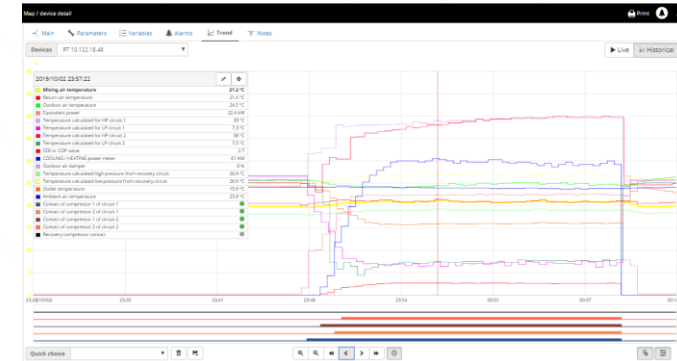
## ◆ REMOTE CONTROL

- A physical IP address allows to establish the connection via Internet
- Web interface is the same as local interface



## ◆ REPORT AND GRAPHS

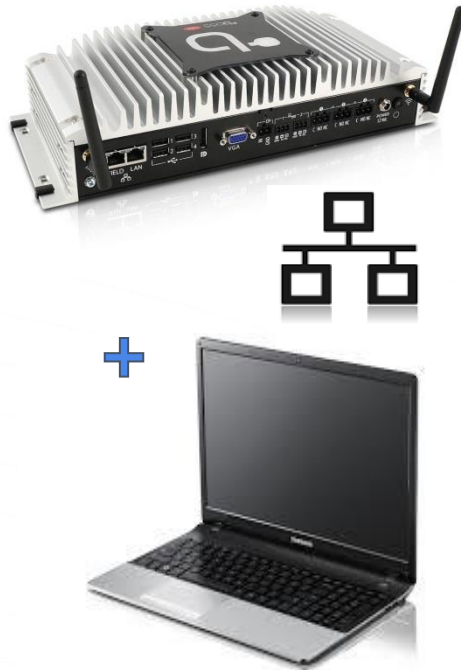
- Represent the values and trends of all logged variables in the system
- Data are easily accessible to each user for analysis



# DIFFERENT MONITORING SOLUTIONS

BOSS CIAT (until 300 units)

LAN



Wifi



Local

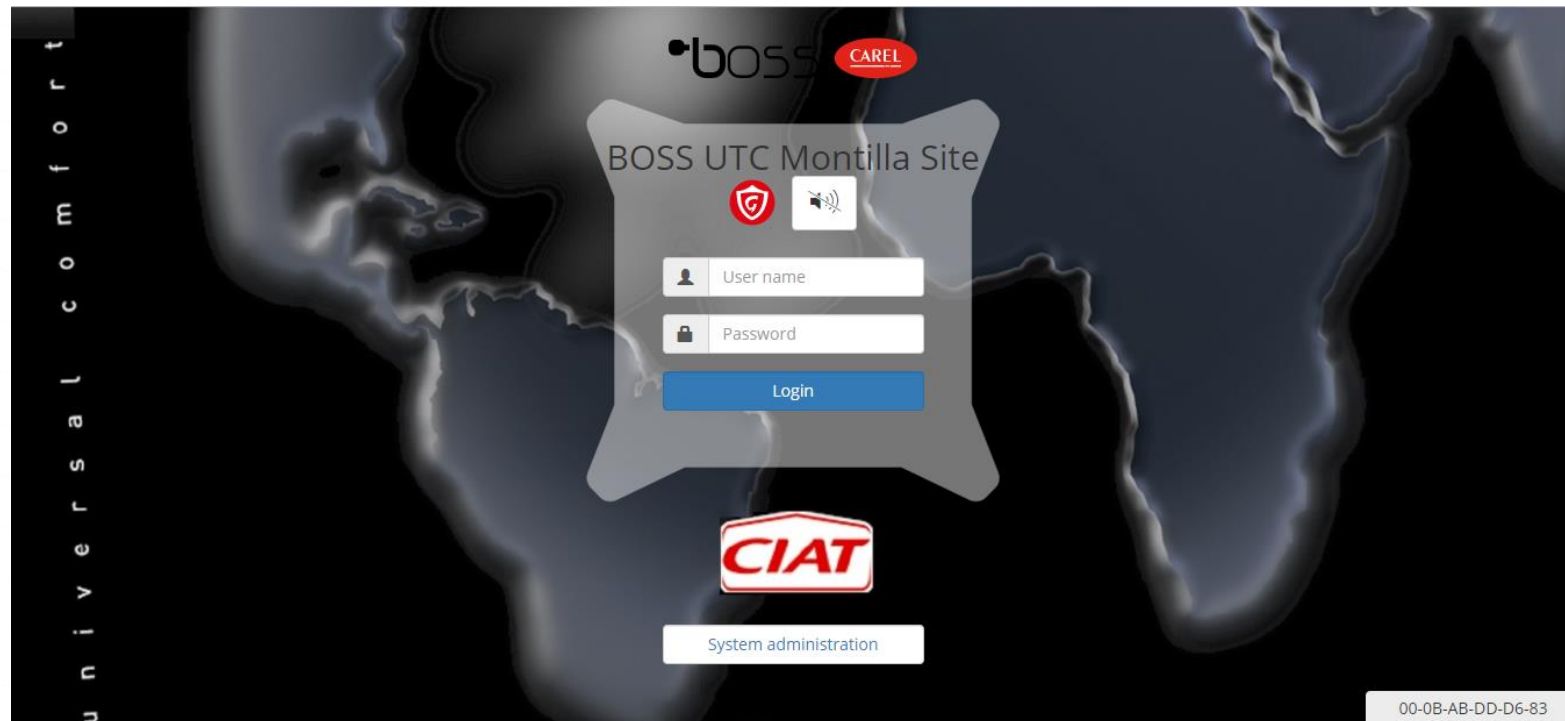


# DIFFERENT MONITORING SOLUTIONS

## BOSS CIAT (until 300 units)

EXAMPLE OF REMOTE ACCESS TO

<https://10.122.17.191/boss/>



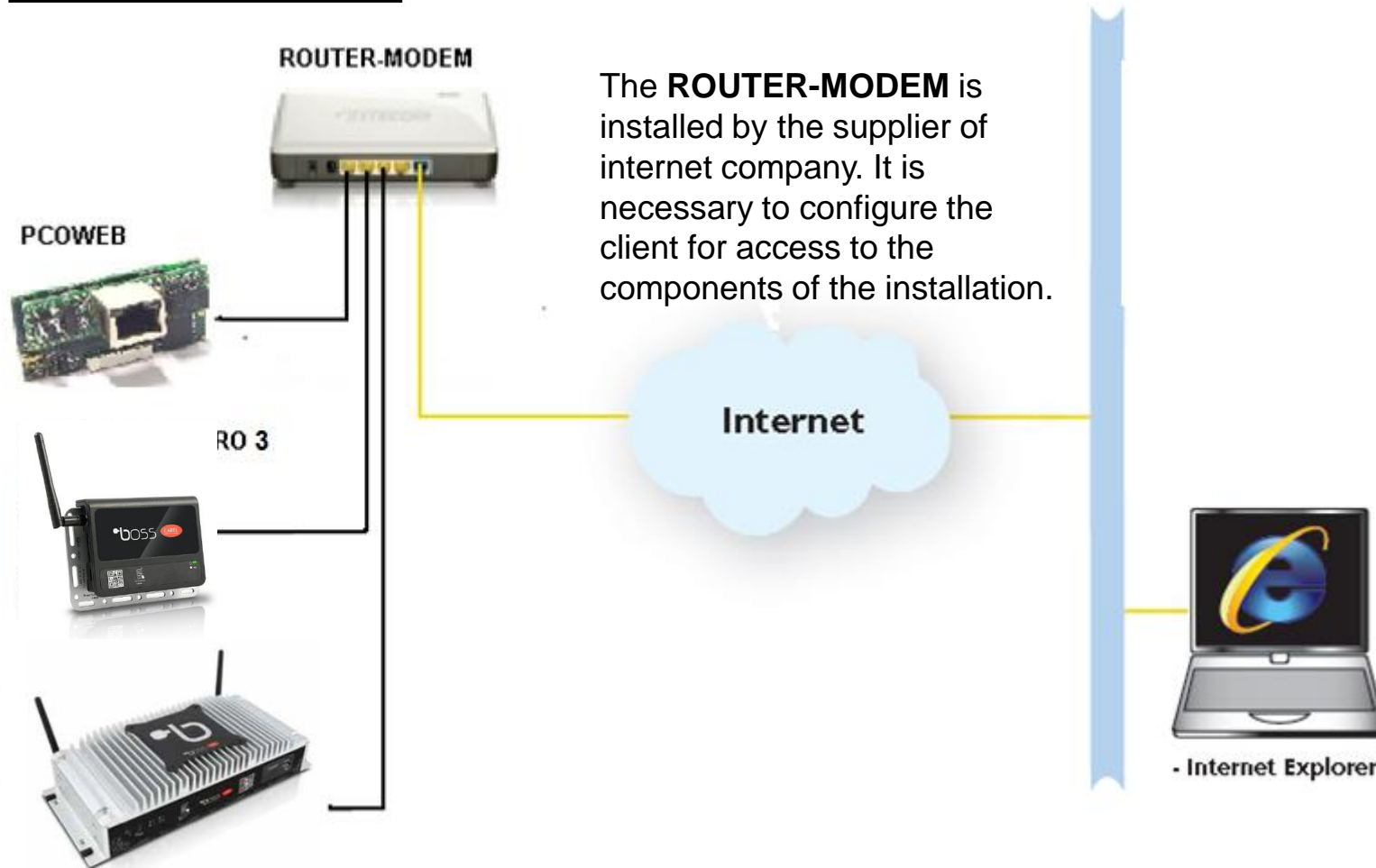
# REMOTE CONNECTION TO INSTALLATION

- LAN ROUTER
- 3G/4G ROUTER
- BLUEDGE DIGITAL  
(1 or 3 units)



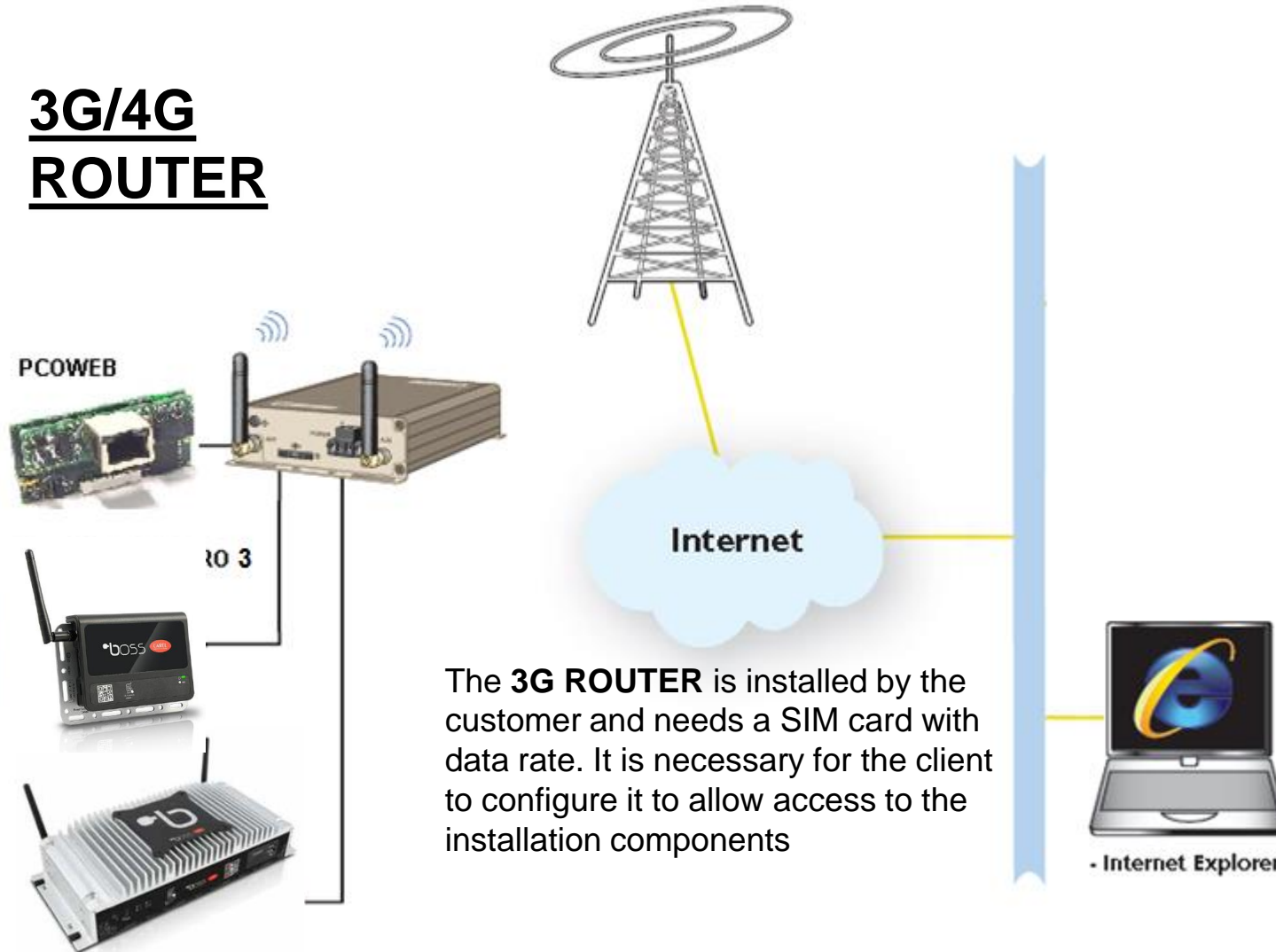
# REMOTE CONNECTION TO INSTALLATION

## LAN ROUTER



# REMOTE CONNECTION TO INSTALLATION

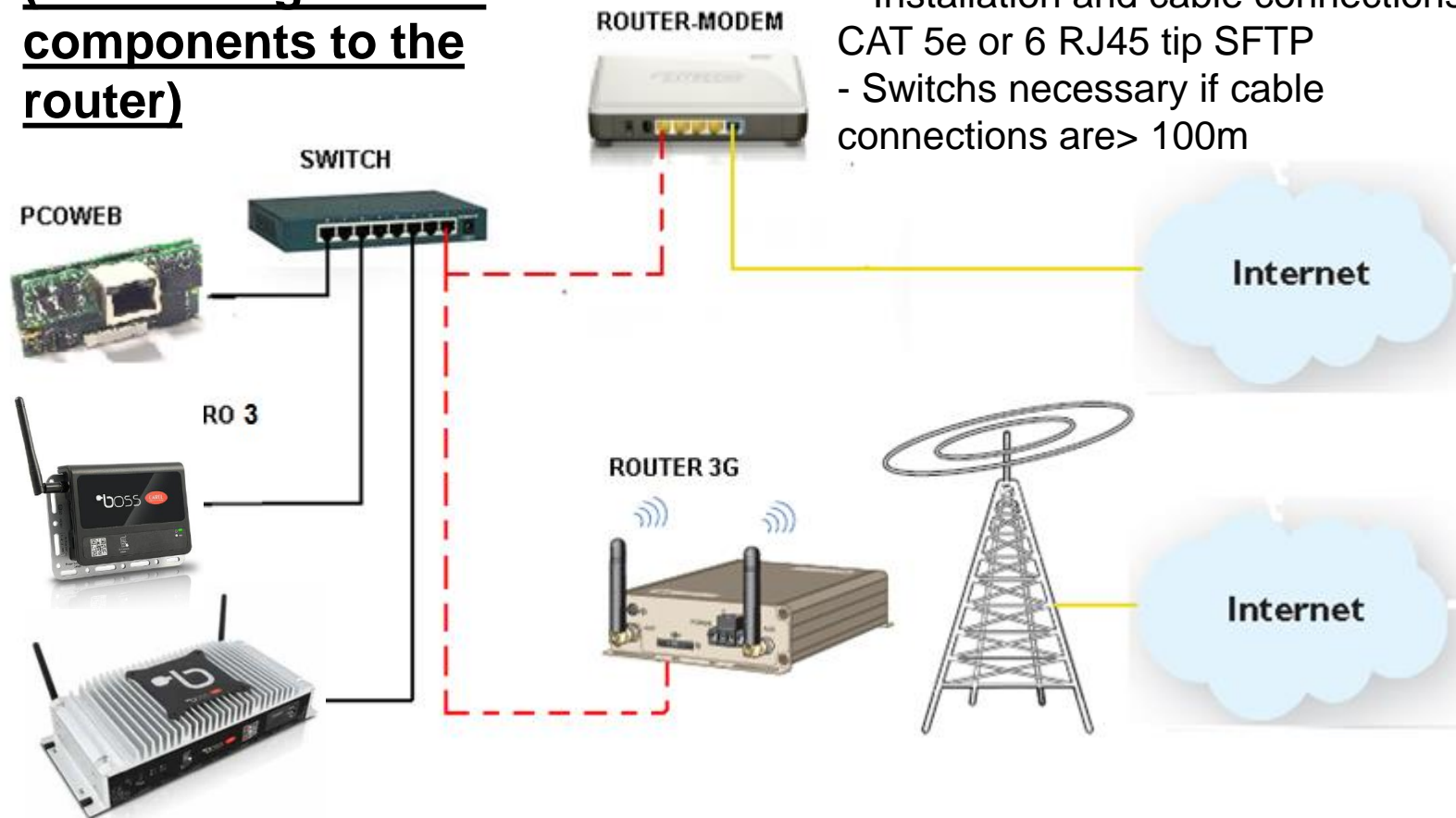
## 3G/4G ROUTER



# REMOTE CONNECTION TO INSTALLATION

## SWITCH

(connecting several components to the router)

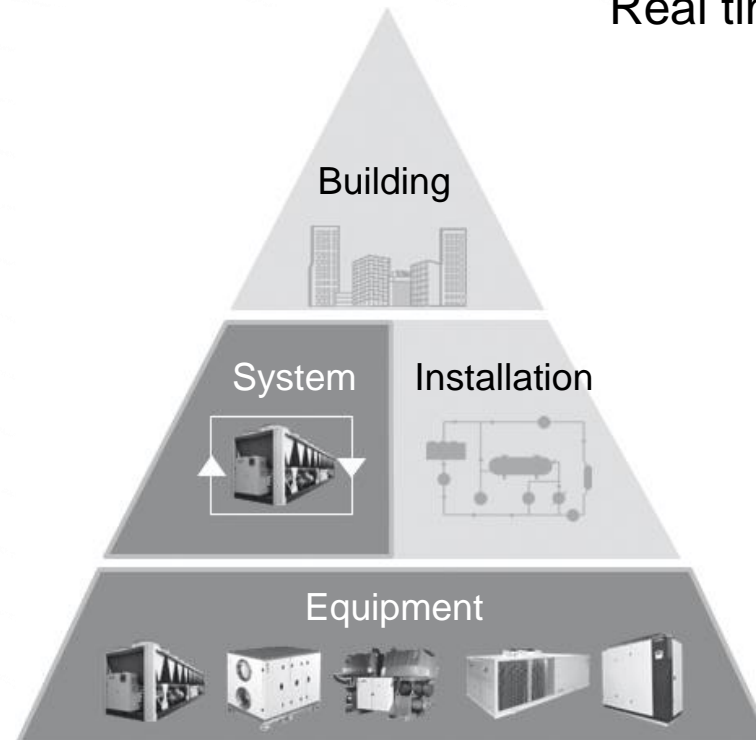


# REMOTE CONNECTION TO INSTALLATION



## Monitoring solution

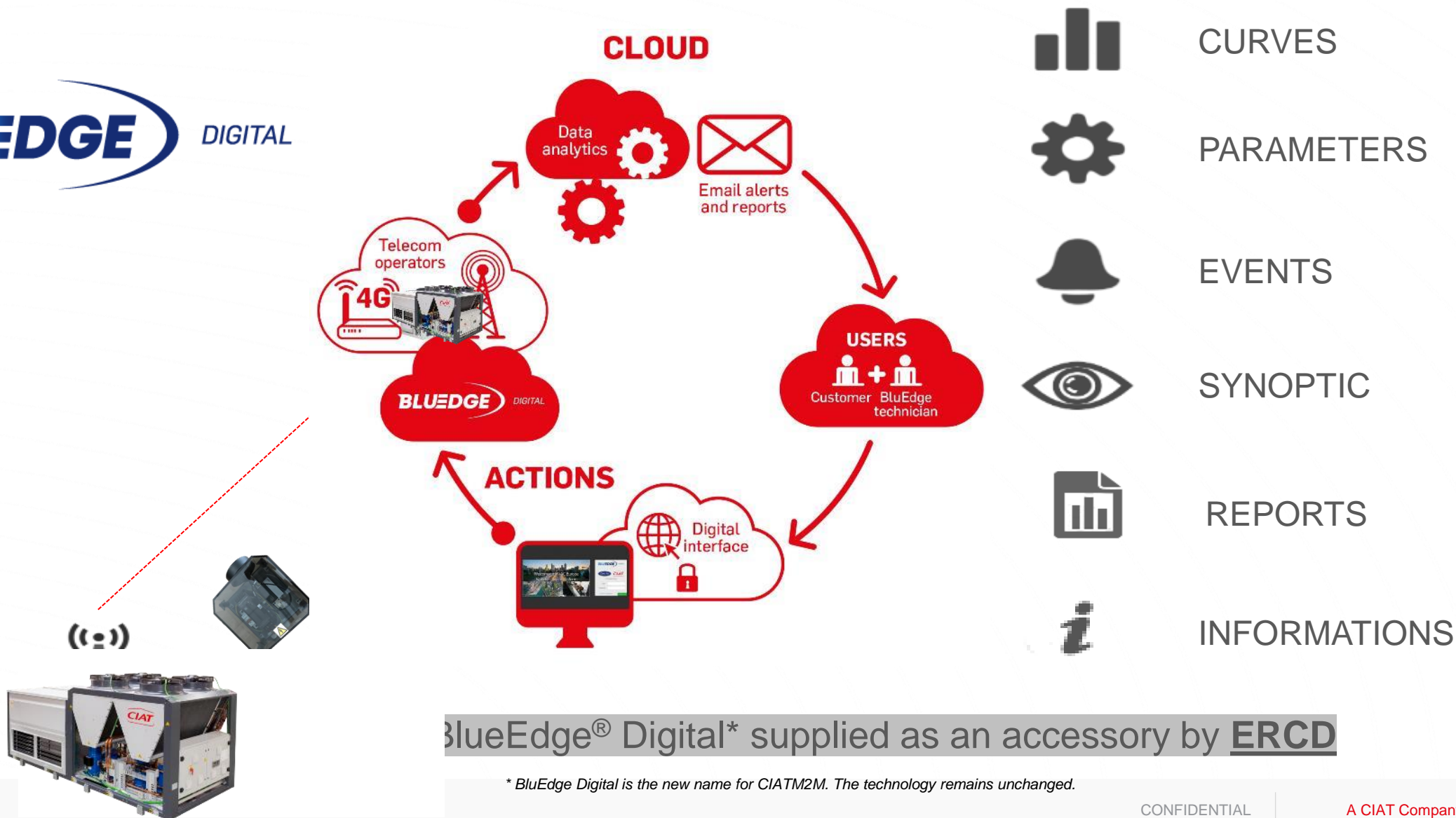
To track, monitor  
hvac system performance &  
take preventive and  
corrective actions remotely



Real time monitoring  
24/7

- Chiller and
- Heat pump
- **Rooftop units**
- Air handling unit
- Close control AC
- Drycooler

# REMOTE CONNECTION TO INSTALLATION



BlueEdge® Digital\* supplied as an accessory by **ERCD**

\* BlueEdge Digital is the new name for CIATM2M. The technology remains unchanged.

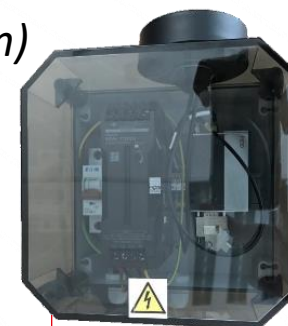
# REMOTE CONNECTION TO INSTALLATION



DIGITAL



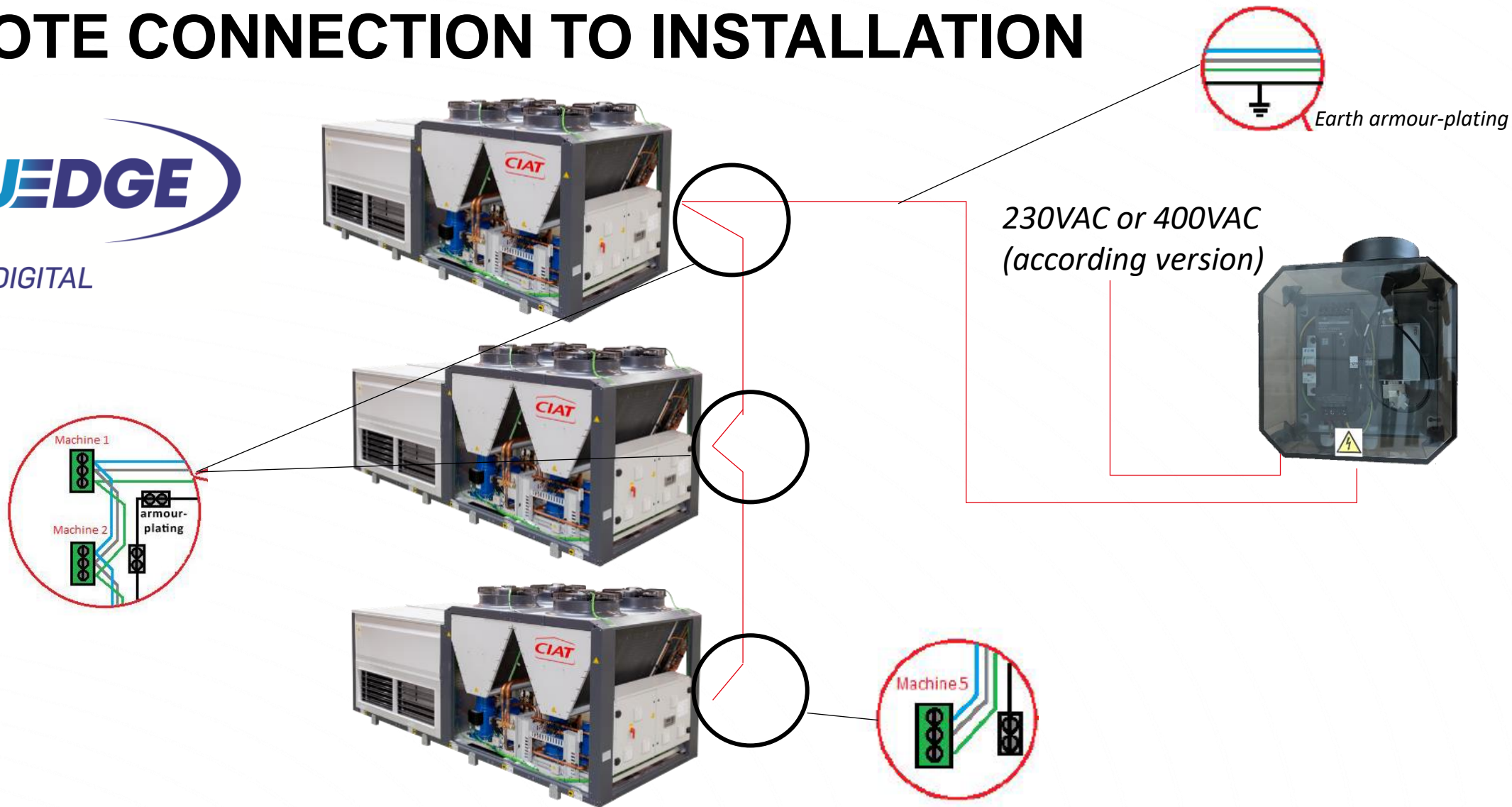
230VAC or 400VAC  
(according version)



MODBUS RS485

*Example of a Box CS connection diagram with 1 machine*

# REMOTE CONNECTION TO INSTALLATION



*Example of a Box CS multi machines connection diagram*

# REMOTE CONNECTION TO INSTALLATION

## Synoptic

View machine synoptics in real time, component states, temperatures, pressures, flow rates, operating modes, etc.



## Parameters

Establish the parameters very easily while being in front of the system All settings are categorized for easy use



## Curves

View predefined curves or draw your own curves (temperatures, pressures, modes, states, etc.)



## Informations

Access all the information you need on the machine, the modem, the contract...



## Events

View the list of events and the context of each event (state of the installation when the fault appears)



## Reports

Generate reports and visualize the efficiency of the installation, and optimize the installation



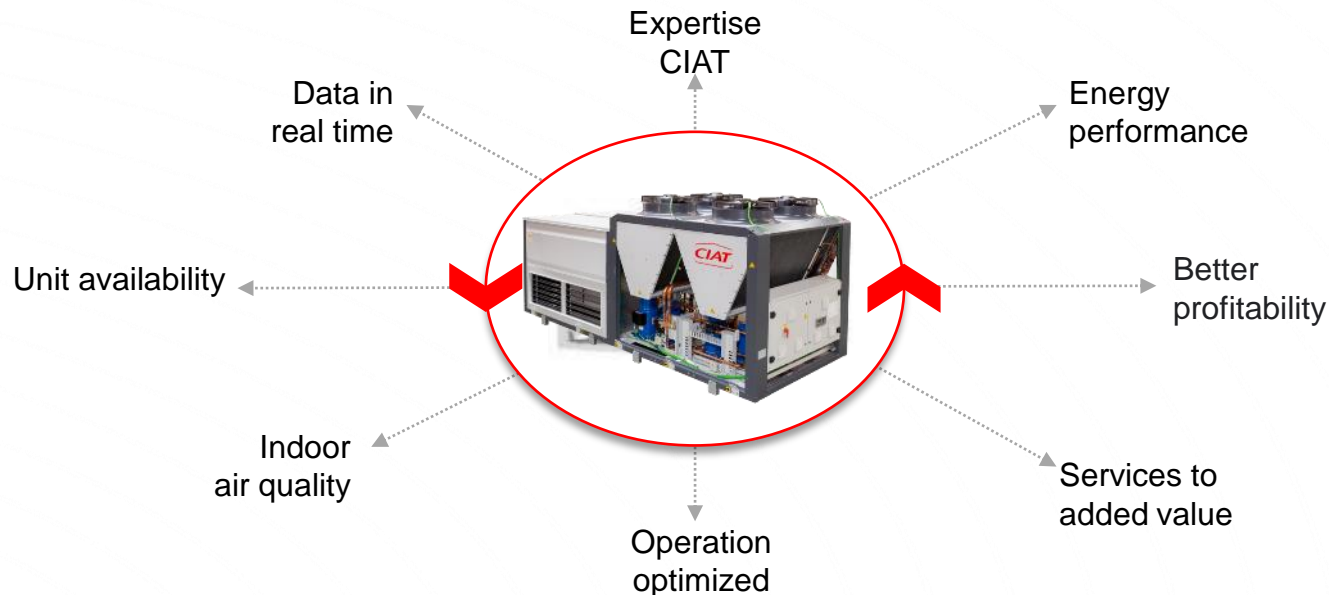
[www.ciatm2m.com](http://www.ciatm2m.com)

MAINTENANCE SERVICE FACILITIES

# REMOTE CONNECTION TO INSTALLATION



## Expertise et Analyse



# REMOTE CONNECTION TO INSTALLATION

- **Composition of the box (available in 230v and 400v)**



- 1 GPRS modem / 4G LTE-M
- 1 SIM SMART card
- 1 power supply
- 1 circuit breaker
- 1 GSM antenna
- Rail mounting
- Closed box to protect and transport the equipment
- Interconnection terminal (bus, power,...)

Box CS 230VAC 4G 30S GPS



Box CS 400VAC 4G 30S GPS



This box can be used both on the machines already put in service (existing fleet), on new machines

# REMOTE CONNECTION TO INSTALLATION

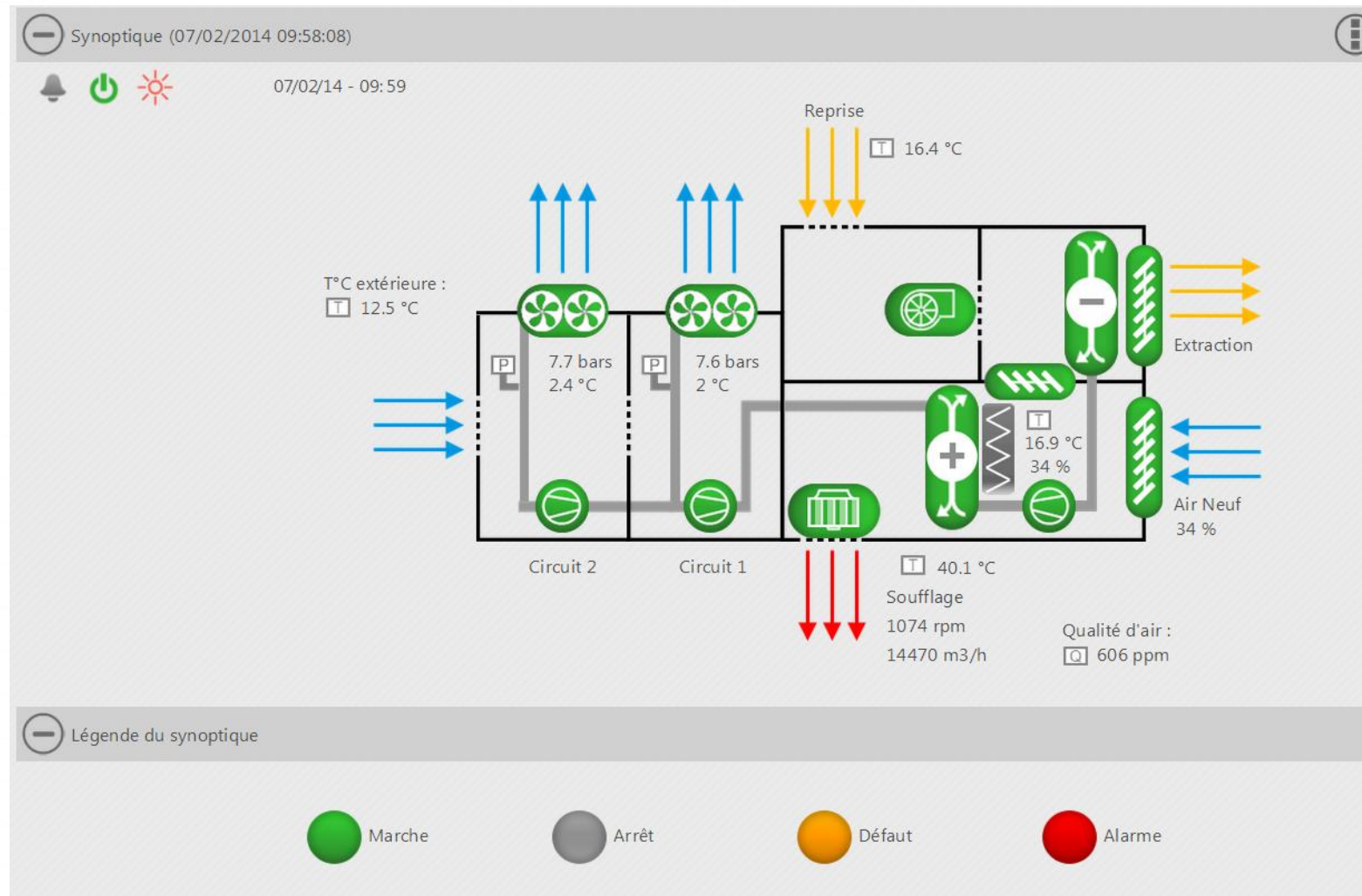
<https://www.ciatm2m.com/>

Link will change (we will inform when the change is done)



The login screen for the BluEdge Digital platform. It features the "BLUEEDGE DIGITAL" logo at the top, followed by the "Carrier" and "CIAT" logos. Below the logos is the word "Connection". There are two input fields: "Login" and "Password". A link for "Password forgotten?" is located below the password field. A green "Connection" button with a right-pointing arrow is at the bottom right.

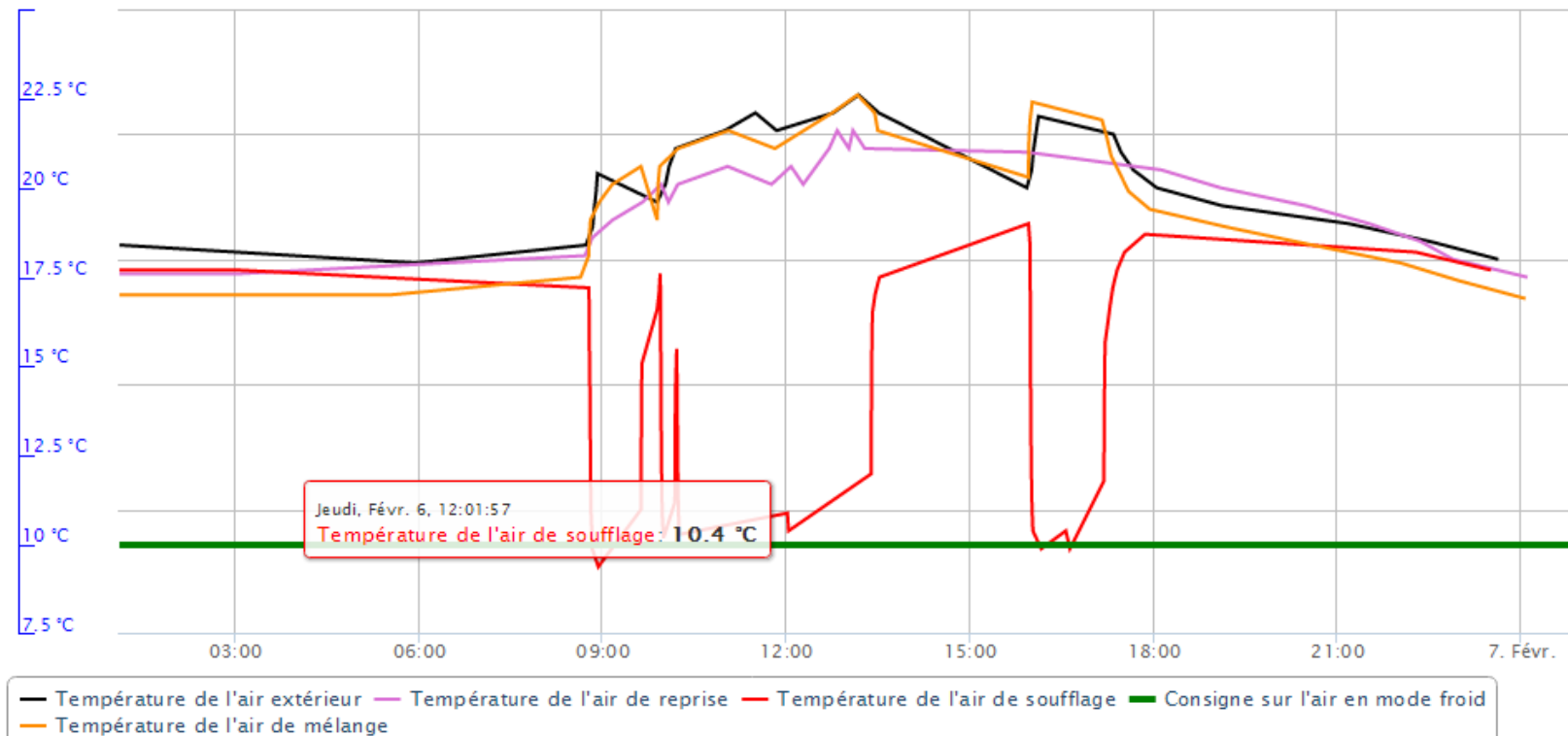
# REMOTE CONNECTION TO INSTALLATION









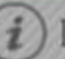
# REMOTE CONNECTION TO INSTALLATION

— Courbes de fonctionnement du 06/02/2014 01:04 au 07/02/2014 01:04 **BLUEDGE** DIGITAL



Courbe de température



# REMOTE CONNECTION TO INSTALLATION

Mes installations  CIATESA > IPF240  Syno.  Cour.  Evén.  Hist.  Para.  Info.

Installations

- Agence CIAT Region Ouest
- Agence CIAT Rhône Alpes
- Alinea Aubagne
- Alstom Transport Reichsh.
- Centre Antoine LACASSAGNE 
- CIAT ITALIA S.R.L.
- CIAT Service bureaux
- CIATESA
  - IPF240
- Cuisine centrale du mans
- France Plastique Recycla.
- GEG 
- Hotel Escargotière

Commande à distance (07/02/2014 09:40:16)

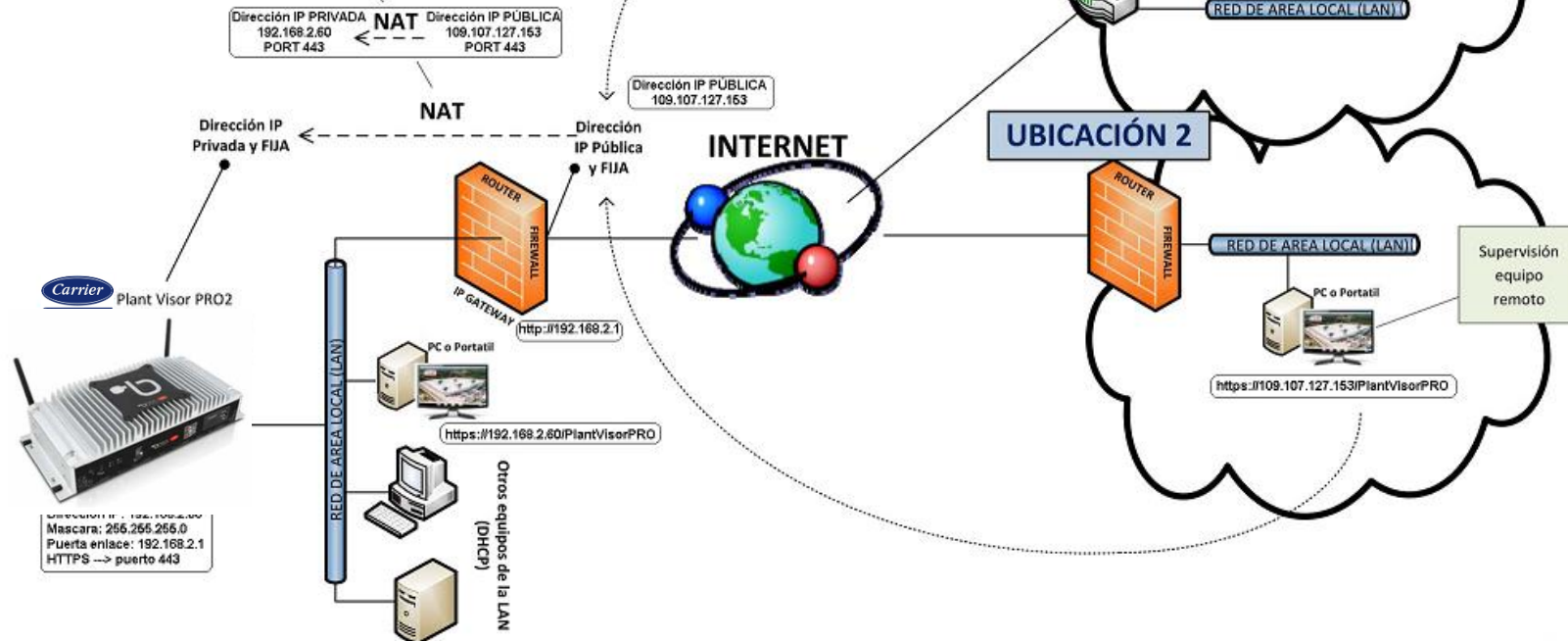
Marche/arrêt de l'unité	Marche ▾
Mode de fonctionnement	Chaud ▾
Consigne sur l'air en mode froid	10 °C
Consigne sur l'air en mode chaud	25 °C
Consigne de régulation d'humidité en mode froid	55 %rH
Nombre d'étages de compresseur à délester	0
Nombre d'étages de résistances électriques à délester	0

**BACKUP**

# REMOTE CONNECTION TO INSTALLATION

## EJEMPLO DE CONFIGURACIÓN CONEXIÓN REMOTA DEL PVPRO2 A REALIZAR POR EL CLIENTE DE LA INSTALACIÓN

Configuración que se aplica sobre Routers/Firewalls (Gateways en general) para hacer una transición de direcciones y/o puertos entre la dirección pública fija del Router/Firewall y la dirección privada de PLANT VISOR PRO2. De este modo, la dirección privada de PLANT VISOR PRO es accesible desde ubicaciones remotas.



# REMOTE CONNECTION TO INSTALLATION

## DDNS USING

**Dynamic DNS** is a system that allow real-time updating of information on domain names on a server name. The most common use is given is to allow the assignment of an Internet domain name to a computer with a variable IP address (dynamic). This allows connecting to the computer in question without having to know the IP address.

### Manage Hosts

EXAMPLE of DDNS with web page <http://www.noip.com>

Current Hosts: 2 of 3    Need More Hosts? Enhance Your Account!    Enhance Your Account

Host	IP/URL	Action
Hosts By Domain		
servehttp.com		
pvpro-grupociat.servehttp.com	2.142.186.224	Modify  Remove
pvpro-remote.servehttp.com	109.107.127.153	Modify  Remove

Add A Host

### Domain Name Service

EXAMPLE of the router configuration with DDNS

Manual DNS Configuration

Primary DNS Server	
Secondary DNS Server	
DNS Domain	

Dynamic DNS Client Configuration

Enabled	<input checked="" type="checkbox"/>
Service	no-ip.com
Domain	pvpro-grupociat.servehttp.c
Username	grupociat
Password	Set New: <input type="checkbox"/>
<div>Reset    Update</div>	

dyndns.com  
no-ip.com  
zoneedit.com  
easydns.com



**EFFICIENCY IS IN THE AIR**